

LOC I-IWD	APP CRS	Rwy Idg	6501
111.5	270°	TDZE	1230
		Apt Elev	1230

ILS or LOC RWY 27

GOGEBIC-IRON COUNTY (IWD)

▼

NA

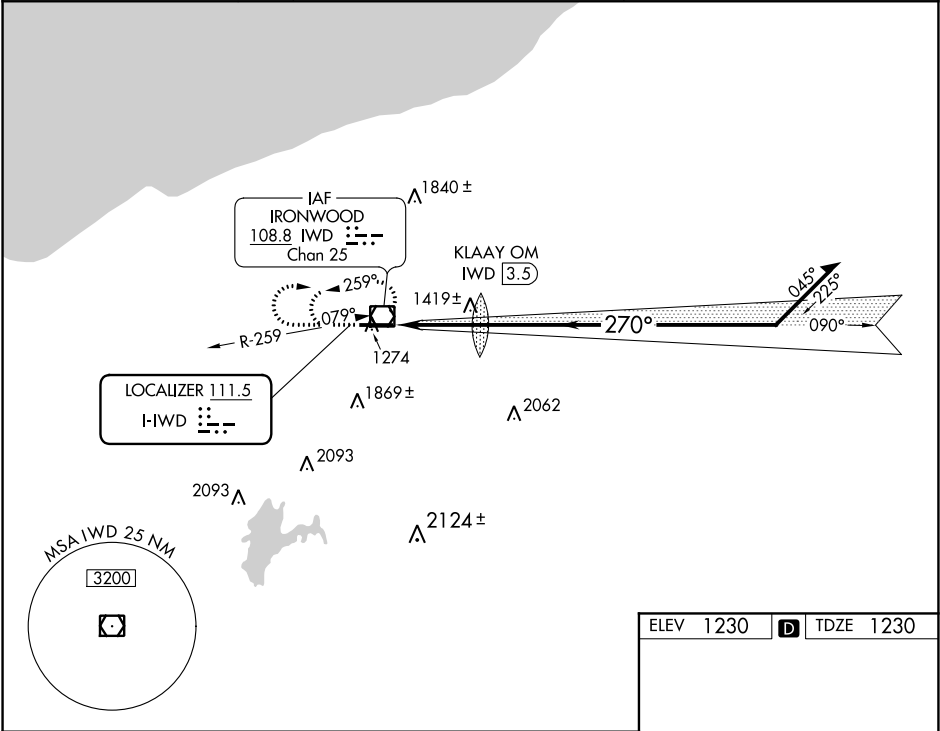
-27°C

When local altimeter setting not received, use Ashland altimeter setting and increase all DA 132 feet and all MDA 140 feet, increase S-LOC 27 Cat C/D visibility ½ mile, Circling Cat A/B visibility ¼ mile and Circling Cat C ½ mile. For inop ALS when using Ashland altimeter setting, increase S-ILS 27 all Cats visibility to 1.

MALSR

MISSED APPROACH:
Climb to 3300 then
right turn direct IWD
VOR/DME and hold.

AWOS-3PT	MINNEAPOLIS CENTER	UNICOM
125.175	133.55	122.8 (CTAF) 1



3300

IWD

IWD VOR/DME

090°

Remain within 15 NM of IWD VOR/DME

KLAAY OM IWD 3.5

2311

270°

3300

2800

2500*

*LOC only

GS 3.00°

TCH 55

3.2 NM

CATEGORY	A	B	C	D
S-ILS 27		1430-½	200 (200-½)	
S-LOC-27	1720-½	490 (500-½)	1720-¾	1720-1
			490 (500-¾)	490 (500-1)
CIRCLING	2100-1	2100-1¼	2100-2½	2220-3
	870 (900-1)	870 (900-1¼)	870 (900-2½)	990 (1000-3)

ELEV 1230

D

TDZE 1230

6502 X 120

1303±

1307

1318±

270° 3.2 NM from FAF

REIL Rwy 9 1

HIRL Rwy 9-27 1

FAF to MAP 3.2 NM

Knots	60	90	120	150	180
Min:Sec	3:12	2:08	1:36	1:17	1:04