

WAAS CH <b>50212</b> <b>W27A</b>	APP CRS <b>270°</b>	Rwy Idg <b>6501</b> TDZE <b>1230</b> Apt Elev <b>1230</b>
--	------------------------	---

RNAV (GPS) RWY 27  
GOGEBIC-IRON COUNTY (IWD)

  
  
 -27°C

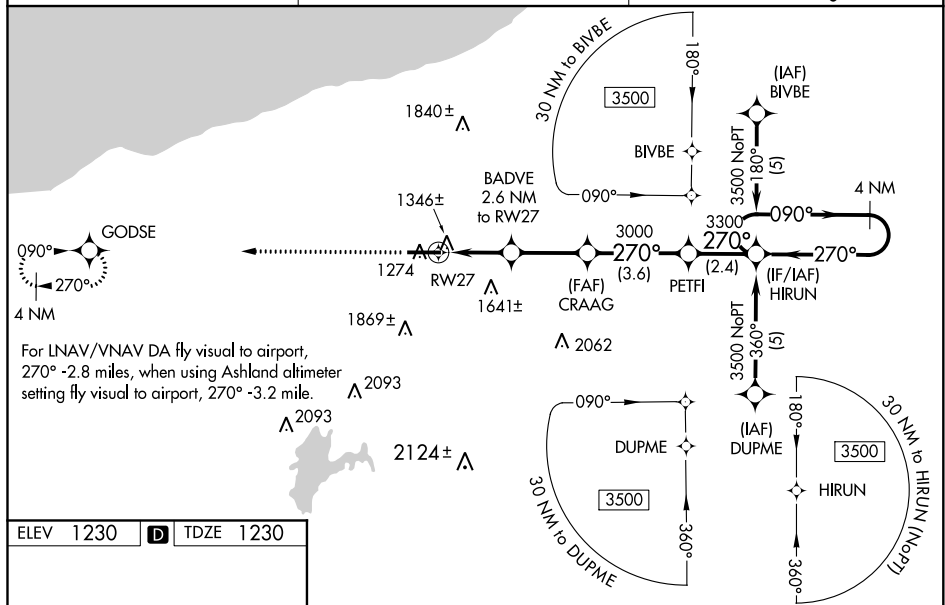
Inoperative table does not apply to LPV and LNAV/VNAV all Cats and LNAV Cats A and B. For uncompensated Baro-VNAV systems, LNAV/VNAV NA below -17°C (2°F) or above 46°C (114°F). DME/DME RNP-0.3 NA. When using Ashland altimeter setting: inop table does not apply to LNAV/VNAV all Cats and LNAV Cat A. When using Ashland altimeter setting: for inoperative MALSR, increase LNAV Cat B visibility to 1¼ mile. Baro-VNAV and VDP NA when using Ashland altimeter setting. When local altimeter setting not received, use Ashland altimeter setting and increase all DA 132 feet, and all MDA 140 feet, increase LNAV/VNAV Cat C visibility ¼ mile, LNAV Cat C/D visibility ½ mile, and Circling Cat A/B visibility ¼ mile, Cat C ½ mile.

MALSR



**MISSED APPROACH:**  
Climb to 3500 direct  
GODSE and hold.

AWOS-3PT <b>125.175</b>	MINNEAPOLIS CENTER <b>133.55</b>	UNICOM <b>122.8</b> (CTAF) <b>0</b>
----------------------------	-------------------------------------	--



3500 MSL

GODSE

\*1.9 NM to RW27

BADVE 2.6 NM to RW27

CRAAG

PETFI

HIRUN

4 NM Holding Pattern

090°

270°

3500

GP 3.00°

TCH 55

For LNAV/VNAV DA fly visual to airport, 270° -2.8 miles, when using Ashland altimeter setting fly visual to airport, 270° -3.2 mile.

1.9 0.7 2.7 NM 3.6 NM 2.4 NM

CATEGORY	A	B	C	D
LPV DA	1430-1 200 (200-1)			
LNAV/VNAV DA	2166-2	936 (1000-2)	2166-2 <sup>3</sup> / <sub>4</sub> 936 (1000-2 <sup>3</sup> / <sub>4</sub> )	2166-3 936 (1000-3)
LNAV MDA	1900-1	670 (700-1)	1900-1 <sup>1</sup> / <sub>4</sub> 670 (700-1 <sup>1</sup> / <sub>4</sub> )	1900-1 <sup>1</sup> / <sub>2</sub> 670 (700-1 <sup>1</sup> / <sub>2</sub> )
CIRCLING	2100-1 870 (900-1)	2100-1 <sup>1</sup> / <sub>4</sub> 870 (900-1 <sup>1</sup> / <sub>4</sub> )	2100-2 <sup>1</sup> / <sub>2</sub> 870 (900-2 <sup>1</sup> / <sub>2</sub> )	2220-3 990 (1000-3)

REIL Rwy 9 **1**

HIRL Rwy 9-27 **1**

GOGEBIC-IRON COUNTY (IWD)  
RNAV (GPS) RWY 27