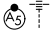


WAAS CH <b>42532</b> <b>W28A</b>	APP CRS <b>278°</b>	Rwy Idg TDZE Apt Elev	<b>5501</b> <b>621</b> <b>621</b>
--	------------------------	-----------------------------	---

RNAV (GPS) RWY 28  
MANISTEE COUNTY-BLACKER (MBL)

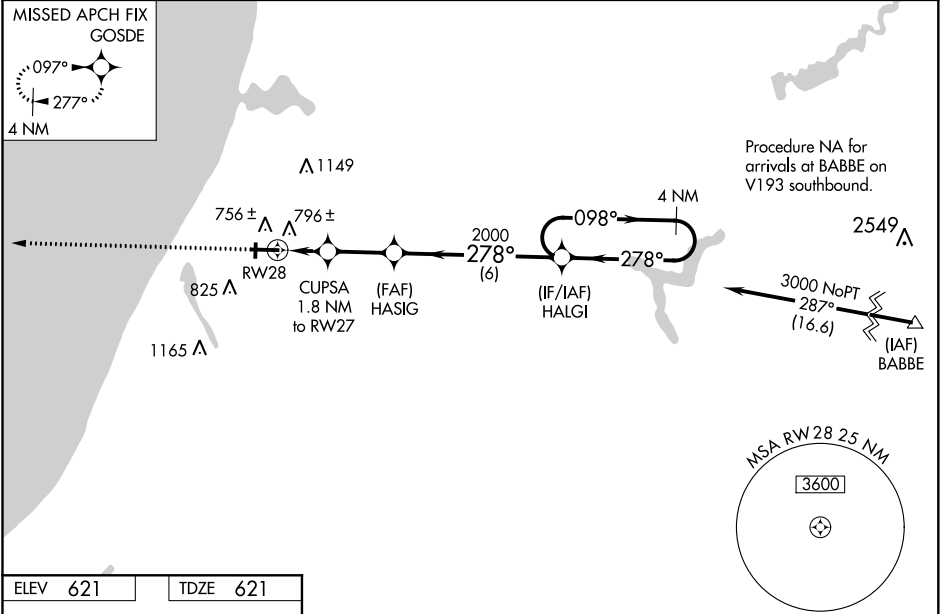
**⚠** Night landing: Rwy 1/19 NA. Baro-VNAV NA when using Ludington altimeter setting. For uncompensated Baro-VNAV systems, LNAV/VNAV NA below -16°C (4°F) or above 54°C (130°F). DME/DME RNP-0.3 NA. VDP NA with Ludington altimeter setting. When local altimeter setting not received, use Ludington altimeter setting and increase all DA 50 feet and all MDA 60 feet. Increase LNAV/VNAV visibility all Cats 1/8 mile. Increase LNAV Cats C/D visibility 1/4 mile, and Circling Cat C visibility 1/4 mile.

MALSR



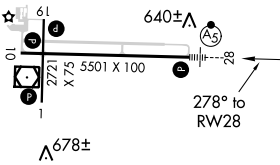
MISSED APPROACH:  
Climb to 2500 direct  
GOSDE and hold.

AWOS-3PT <b>111.4</b>	MINNEAPOLIS CENTER <b>120.85 322.35</b>	UNICOM <b>122.8 (CTAF) 0</b>
--------------------------	--	---------------------------------



ELEV **621** TDZE **621**

**⚠** 727±



HIRL Rwy 10-28 **0**  
MIRL Rwy 1-19 **0**  
REIL Rwy 10 **0**

2500	GOSDE	VGSI and RNAV glidepath not coincident (VGSI Angle 3.00/TCH 45).				4 NM Holding Pattern
*LNAV only.		CUPSA 1.8 NM to RWY 28	HASIG 2000	HALGI	098° → 3000	GP 3.00° TCH 50
*1.2 NM to RWY 28		*1240	2000	278°	← 278°	
-1.2 NM - 0.6 NM - 2.4 NM - 6 NM						
CATEGORY	A	B	C	D		
LPV DA	821-1/2		200 (200-1/2)			
LNAV/VNAV DA	984-3/4		363 (400-3/4)			
LNAV MDA	1060-1/2		439 (500-1/2)		1060-3/4	439 (500-3/4)
CIRCLING	1120-1		1160-1		1200-1 1/2	1300-2 1/4
	499 (500-1)		539 (600-1)		579 (600-1 1/2)	679 (700-2 1/4)

EC-1, 31 DEC 2020 to 28 JAN 2021

EC-1, 31 DEC 2020 to 28 JAN 2021