

WAAS CH 56506 W07A	APP CRS 069°	Rwy Idg TDZE 959 Apt Elev 959	5350
--	------------------------	---	-------------

RNAV (GPS) RWY 7

BRANCH COUNTY MEMORIAL (OEB)

RNP APCH.

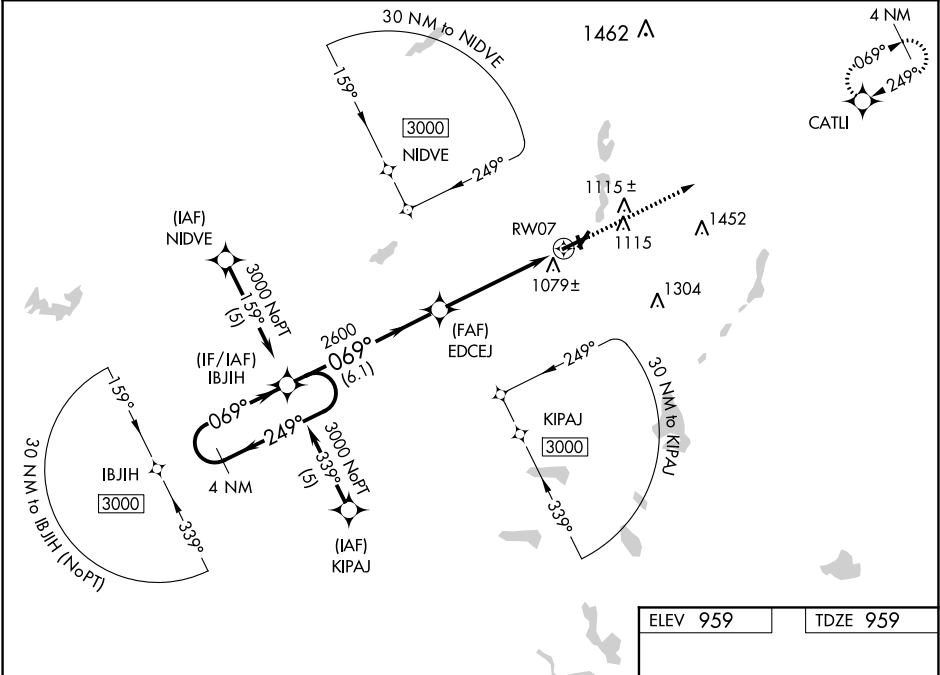
▼

▲

Rwy 7 helicopter visibility reduction below ¾ SM NA. Baro-VNAV NA when using Sturgis altimeter setting. For uncompensated Baro-VNAV systems, LNAV/VNAV NA below -16°C or above 54°C. Circling NA to Rwys 16 and 34. When local altimeter setting not received, use Sturgis altimeter setting and increase all DAs 48 feet and LPV visibility ¼ mile all Cats and all MDAs 60 feet and LNAV Cat C visibility ¼ mile.

MISSED APPROACH:
Climb to 3000 direct CATLI and hold.

AWOS-3 118.125	GREAT LAKES APP CON ★ 121.2 239.25	UNICOM 122.7 (CTAF)
--------------------------	--	-------------------------------



4 NM Holding Pattern

IBJIH

VGSI and RNAV glidepath not coincident (VGSI Angle 3.00/TCH 32).

3000

CATLI

3000

069°

GP 3.00° TCH 40

EDCEJ

2600

RW07

6.1 NM

5 NM

CATEGORY	A	B	C	D
LPV DA	1307-1¼	348 (400-1¼)		NA
LNAV/VNAV DA	1418-1¾	459 (500-1¾)		NA
LNAV MDA	1420-1	461 (500-1)	1420-1¼ 461 (500-1¼)	NA
CIRCLING	1420-1 461 (500-1)	1440-1 481 (500-1)	1480-1½ 521 (600-1½)	NA

MRL Rwy 4-22 and 7-25

REIL Rwy 7 and 25