

VOR/DME LFD

111.2

Chan 49

APP CRS

064°

Rwy ldg

5350

TDZE

959

Apt Elev

959

VOR RWY 7

BRANCH COUNTY MEMORIAL (OEB)

⚠

When local altimeter setting not received, use Sturgis altimeter setting and increase all MDAs 60 feet and S-7 Cat C visibility ¼ mile.

⚠

Circling NA to Rwys 16 and 34. Rwy 7 helicopter visibility reduction below ¾ SM NA.

MISSED APPROACH: Climb to 2000 then climbing left turn to 2700 via heading 205° and LFD R-244 to DROOL INT/LFD 21 DME and hold.

AWOS-3

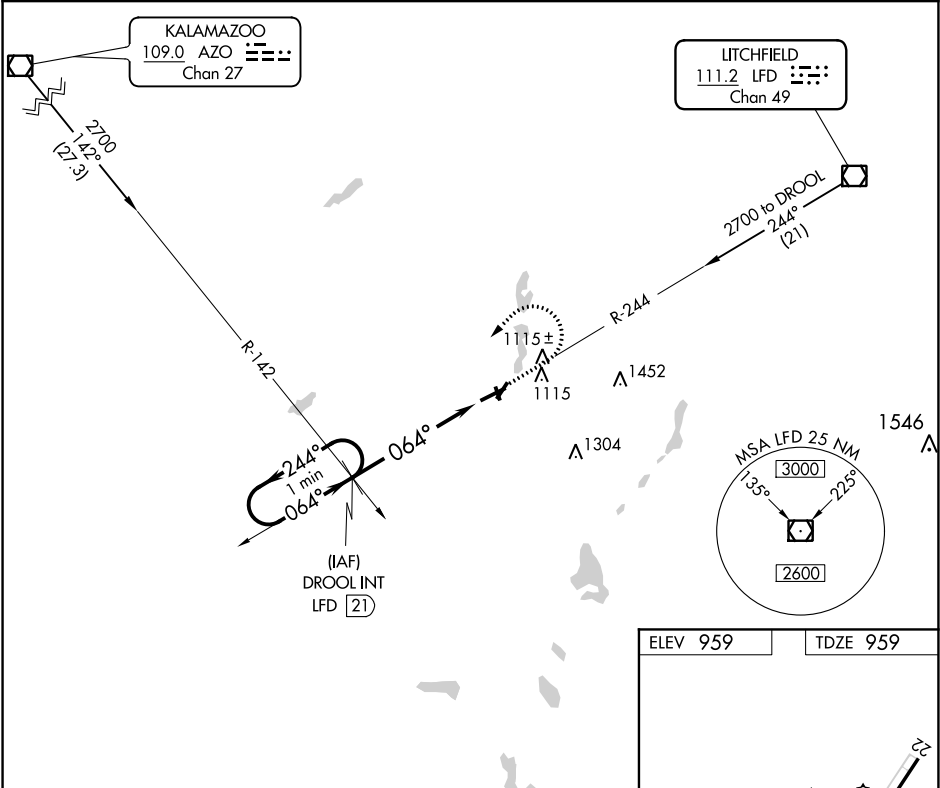
118.125

GREAT LAKES APP CON ★

121.2 239.25

UNICOM

122.7 (CTAF) 0



One Minute Holding Pattern

DROOL INT LFD (21)

2000

2700

LFD R-244

DROOL INT

2700

244°

064°

2.96°

TCH 40

5.4 NM

LFD 15.6

VGSI and descent angles not coincident (VGSI Angle 3.00/TCH 32).

CATEGORY	A	B	C	D
S-7	1440-1	481 (500-1)	1440-1¼ 481 (500-1¼)	NA
CIRCLING	1440-1	481 (500-1)	1480-1½ 521 (600-1½)	NA

ELEV 959

TDZE 959

MIRL Rwys 4-22 and 7-25 0

REIL Rwys 7 and 25 0

FAF to MAP 5.4 NM

Knots 60 90 120 150 180

Min:Sec 5:24 3:36 2:42 2:10 1:48

064° 5.4 NM from FAF

5350 X 75

3500 X 75

34

91

22

64