

VOR/DME LFD <b><u>111.2</u></b> Chan <b>49</b>	APP CRS <b>244°</b>	Rwy Idg <b>5350</b> TDZE <b>959</b> Apt Elev <b>959</b>
--	------------------------	---

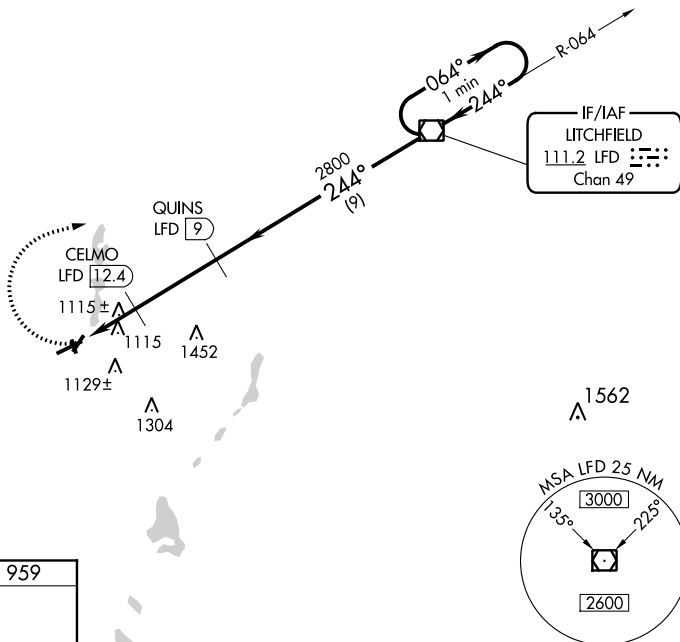
VOR/DME RWY 25  
BRANCH COUNTY MEMORIAL (OEB)

- T** When local altimeter setting not received, use Sturgis altimeter setting and  
**A** increase all MDAs 60 feet and S-25 Cat C visibility  $\frac{1}{4}$  mile. Rwy 25  
 helicopter visibility reduction below 1 SM NA. Circling NA to Rwy 16 and 34.

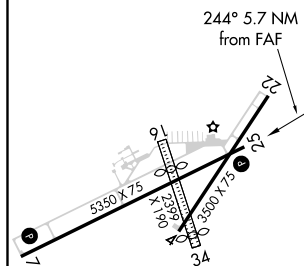
**MISSED APPROACH:** Climbing right turn to 2800 direct LFD VOR/DME and hold.

AWOS-3 <b>118.125</b>	GREAT LAKES APP CON ★ <b>121.2 239.25</b>	UNICOM <b>122.7 (CTAF) 0</b>
--------------------------	--	---------------------------------

NoPT for arrival on LFD VOR/DME  
airway radials 009 CW 131.



ELEV 959		TDZE 959
----------	--	----------



**One Minute Holding Pattern**

CATEGORY	A	B	C	D
S-25	1420-1	461 (500-1)	1420-1¼ 461 (500-1¼)	NA
CIRCLING	1420-1 461 (500-1)	1440-1 481 (500-1)	1480-1½ 521 (600-1½)	NA