

WAAS
CH **82405**
W19A

APP CRS
184°

Rwy Idg
TDZE **769**
Apt Elev **772**

RNAV (GPS) RWY 19

FREMONT MUNI (F'FX)

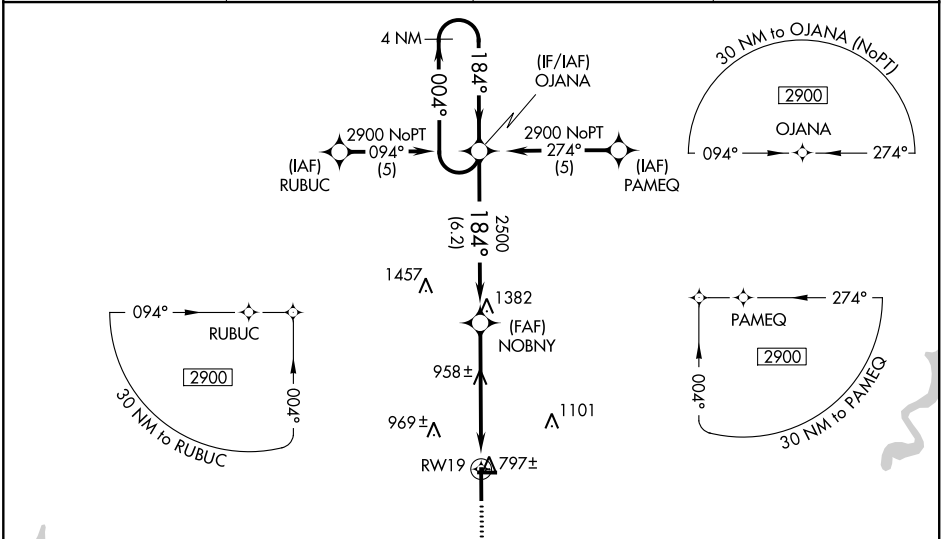
T

A

Baro-VNAV NA when using Muskegon altimeter setting. For uncompensated Baro-VNAV systems, LNAV/VNAV NA below -16°C (4°F) or above 47°C (116°F). Rwy 19 helicopter visibility reduction below ¾ SM NA. DME/DME RNP-0.3 NA. When local altimeter setting not received, use Muskegon altimeter setting and increase all DA 65 feet, and all visibilities ¼ mile. Increase all MDA 80 feet, and Cat C/D visibilities ¼ mile. VDP NA when using Muskegon altimeter setting.

MISSED APPROACH:
Climb to 2900 direct
SACOL and hold.

AWOS-3 118.775	GREAT LAKES APP CON ★ 119.8 290.35	CLNC DEL 118.25	UNICOM 123.0 (CTAF) 0
--------------------------	--	---------------------------	--



ELEV **772**

TDZE **769**

184° to RW19

61

10

3502 X 75

8

6501 X 100

1

859±

Λ

MISSED APCH FIX

SACOL

184°

004°

4 NM

2900

SACOL

VGSI and RNAV glidepath not coincident (VGSI Angle 3.00/TCH 27).

NOBNY

OJANA

4 NM Holding Pattern

004°

184°

2900

GP 3.00°

TCH 40

*LNAV only.

*1.3 NM to RW19

RW19

1.3

3.9 NM

6.2 NM

CATEGORY	A	B	C	D
LPV DA	1074-1 305 (400-1)			
LNAV/VNAV DA	1295-2 526 (600-2)			
LNAV MDA	1220-1 451 (500-1)	1220-1¼ 451 (500-1¼)	1220-1½ 451 (500-1½)	
CIRCLING	1260-1 488 (500-1)	1260-1½ 488 (500-1½)	1340-2 568 (600-2)	