

WAAS CH <b>82613</b> <b>W27A</b>	APP CRS <b>276°</b>	Rwy Idg TDZE Apt Elev	<b>5000</b> <b>753</b> <b>755</b>
--	------------------------	-----------------------------	---

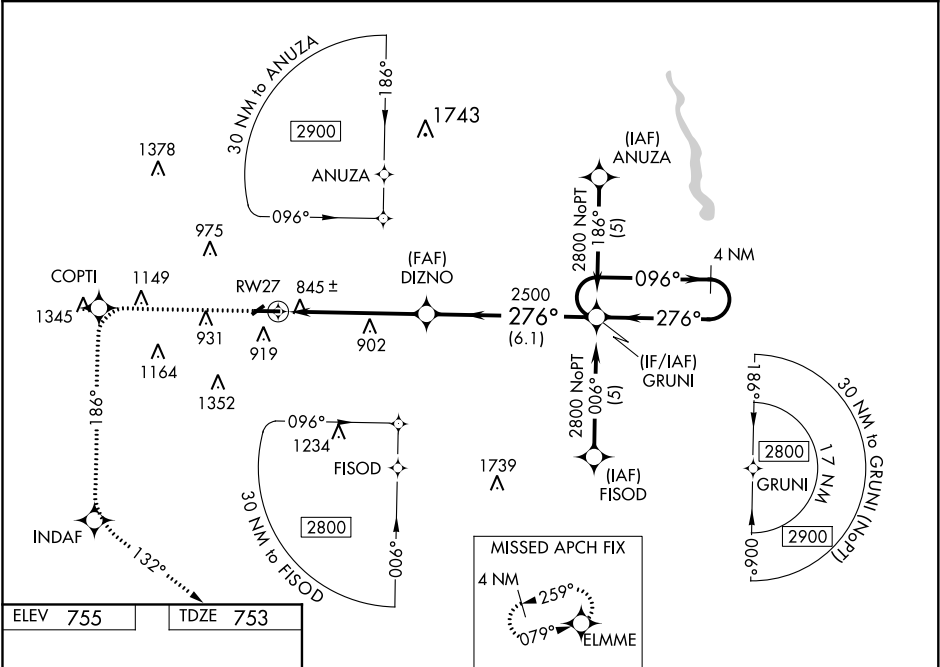
RNAV (GPS) RWY 27

MOUNT PLEASANT MUNI (MOP)

**⚠** For uncompensated Baro-VNAV systems, LNAV/VNAV NA below -16°C (4°F) or above 47°C (116°F). DME/DME RNP-0.3 NA. When local altimeter setting not received, use Alma altimeter setting and increase all DA 42 feet and all MDA 60 feet, increase LPV, LNAV/VNAV all Cats, LNAV Cat D and Circling Cat C visibilities ¼ mile. Baro-VNAV and VDP NA when using Alma altimeter setting. Circling NA to Rwy's 5 and 23.

MISSED APPROACH: Climb to 3000 direct COPTI and via 186° track direct INDAP and via 132° track to ELMME and hold.

AWOS-3 <b>133.025</b>	GREAT LAKES APP CON * <b>126.45 235.625</b>	UNICOM <b>123.0 (CTAF) 0</b>
--------------------------	--	---------------------------------



ELEV <b>755</b>	TDZE <b>753</b>	3000	COPTI	INDAP	ELMME	GRUNI	4 NM Holding Pattern
		↑	tr 186°	tr 132°	△		
		*LNAV only		DIZNO			
			*1.2 NM to RWY 27				
					2500		GP 3.00° TCH 37
			1.2 NM	4.1 NM	6.1 NM		
		CATEGORY	A	B	C	D	
		LPV DA	1099-1¼ 346 (400-1¼)				
		LNAV/VNAV DA	1201-1½ 448 (500-1½)				
		LNAV MDA	1160-1	407 (500-1)	1160-1¼	407 (500-1¼)	
		CIRCLING	1240-1	485 (500-1)	1320-1½	1360-2	565 (600-1½) 605 (700-2)