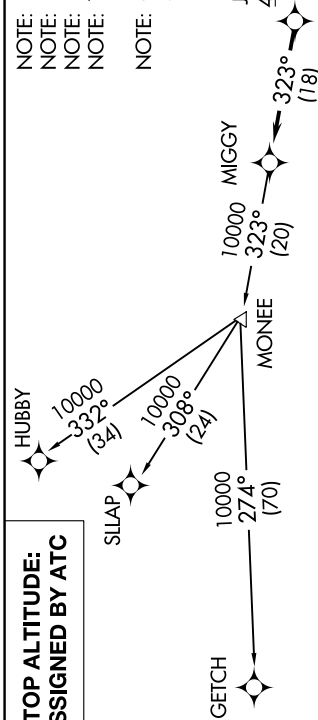


AWOS-3  
119.475  
CTAF  
123.05  
DETROIT DEP CON  
134.3 284.0

NOTE: RNAV 1.  
NOTE: RADAR required.  
NOTE: DME/DME/IRU or GPS required.  
NOTE: Turbojet departures at /above 10000, maintain 280K until advised by ATC.  
NOTE: GETCH TRANSITION: For use by KMKE area arrivals only, or as assigned by ATC.



TOP ALTITUDE:  
ASSIGNED BY ATC

DEPARTURE ROUTE DESCRIPTION

TAKEOFF RUNWAY 9: Climb on heading 096° to 1400 then as assigned for RADAR vectors to cross JAXII at or above 4000, thence....  
TAKEOFF RUNWAY 27: Climb on heading 276° to 1500 then as assigned for RADAR vectors to cross JAXII at or above 4000, thence....  
.....on track 323° to MIGGY, then on (transition). Maintain ATC assigned altitude, expect filed altitude 10 minutes after departure.

GETCH TRANSITION (MIGGY2.GETCH):  
HUBBY TRANSITION (MIGGY2.HUBBY):  
SILAP TRANSITION (MIGGY2.SILAP):



TAKEOFF MINIMUMS:  
Rwy 9: Standard.  
Rwy 27: Standard with minimum climb of 476' per NM to 1500.

NOTE: Chart not to scale.