

OWOSSO, MICHIGAN

AL-5312 (FAA)

19227

APP CRS	Rwy Idg	<b>4300</b>
<b>289°</b>	TDZE	<b>737</b>
	Apt Elev	<b>737</b>

# RNAV (GPS) RWY 29

## OWOSSO COMMUNITY (RNP)

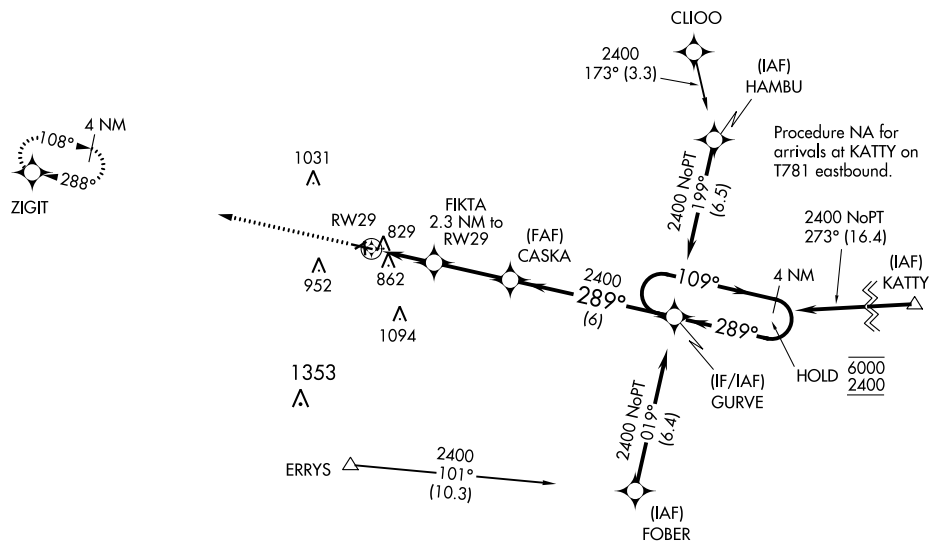
RNP APCH.

**T** Circling NA to Rwy 6, 18, 24 and 36. Procedure NA at night. Rwy 29 helicopter  
**A** visibility reduction below  $\frac{3}{4}$  SM NA.

**MISSED APPROACH:** Climb to 2600  
direct ZIGIT and hold.

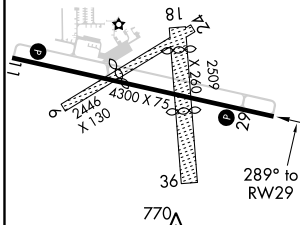
AWOS-3  
118.025

GREAT LAKES APP CON ★  
128.55 257.9

UNICOM  
123.0 (CTAF) **L**

DEC-1, 31 DEC 2020 to 28 JAN 2021

ELEV 737		TDZE 737
----------	--	----------



REIL Rwy 11 and 29 **L**  
MIRL Rwy 11-29 **L**

2600  
↑  
ZIGIT

VGSI and descent angles not coincident  
(VGSI Angle 4.00/TCH 20).

4 NM  
Holding Pattern

CASKA

GURVE

FIKTA  
2.3 NM to RW29

289°

109°

6000

2400

1500

3.00°  
TCH 40

2.3 NM

2.8 NM

6 NM

CATEGORY	A	B	C	D
RNAV MDA	1120-1	383 (400-1)	1120-1½ 383 (400-1½)	NA
<b>C</b> CIRCLING	1220-1 483 (500-1)	1260-1 523 (600-1)	1400-1¾ 663 (700-1¾)	NA

OWOSSO, MICHIGAN  
Amdt 2 15AUG19

43°00'N-84°08'W

OWOSSO COMMUNITY (RNP)  
RNAV (GPS) RWY 29