

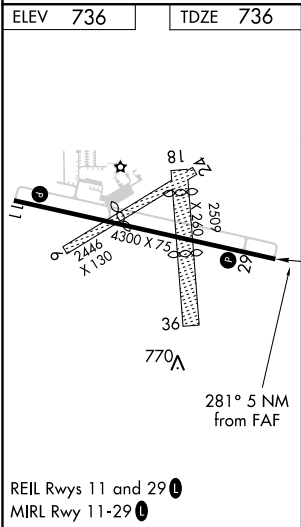
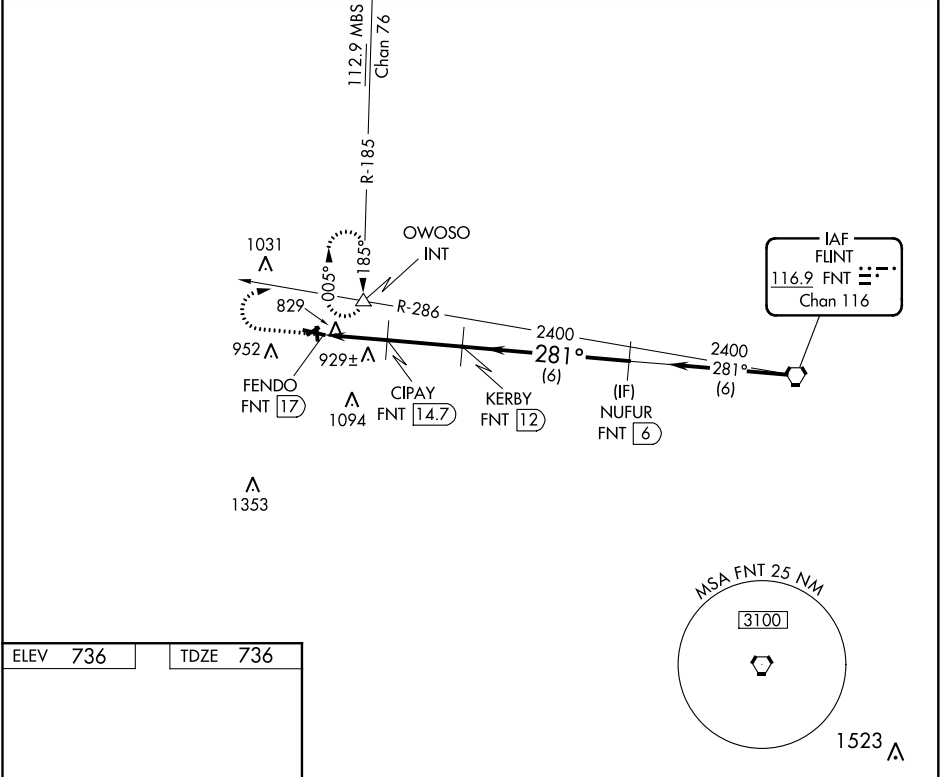
VORTAC FNT	APP CRS	Rwy Idg	4300
116.9	281°	TDZE	736
Chan 116		Apt Elev	736

VOR/DME RWY 29
OWOSSO COMMUNITY (RNP)

⚠ Circling NA to Rwy 6, 18, 24 and 36. Rwy 29 helicopter visibility reduction below ¾ SM NA. When local altimeter setting not received, use Flint altimeter setting and increase all MDA 60 feet and S-29 Cat C visibility ¼ mile.

MISSED APPROACH: Climb to 1900 then climbing right turn to 2700 via FNT VORTAC R-286 to OWOSSO INT and hold.

AWOS-3 118.025	GREAT LAKES APP CON ★ 128.55 257.9	UNICOM 123.0 (CTAF) 0
-------------------	---------------------------------------	--------------------------



1900

↑

2700

FNT

R-286

OWOSSO

△

VGSI and descent angles not coincident
(VGSI Angle 4.00/TCH 20).

KERBY

FNT 12

NUFUR

FNT 6

FENDO

FNT 17

CIPAY

FNT 14.7

281°

2400

2400

1500

3.07°

TCH 40

2.3 NM

2.7 NM

6 NM

Procedure Turn
NA

CATEGORY	A	B	C	D
S-29	1180-1	444 (500-1)	1180-1¼ 444 (500-1¼)	NA
CIRCLING	1220-1 483 (500-1)	1260-1 523 (600-1)	1400-1¾ 663 (700-1¾)	NA