

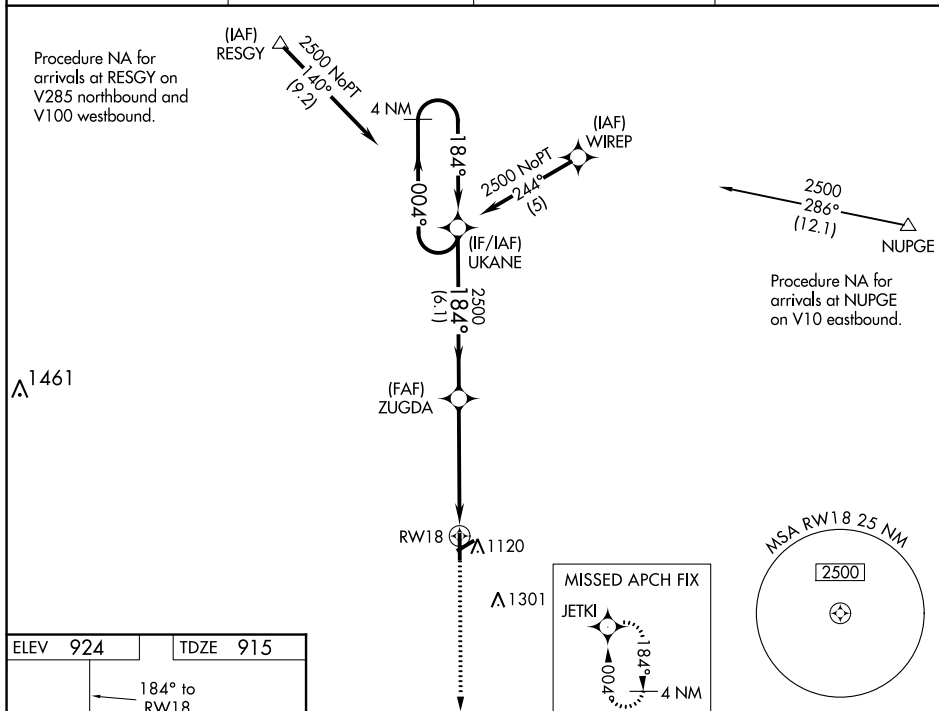
WAAS CH 90230 W18A	APP CRS 184°	Rwy Idg 5201 TDZE 915 Apt Elev 924
--	------------------------	---

RNAV (GPS) RWY 18

KIRSCH MUNI (IRS)

- | | |
|---|---|
| <p>▼ Circling to Rwy 6, 24 NA at night. Baro-VNAV NA. When VGSI inop, Straight-In/Circling Rwy 18 procedure NA at night. DME/DME RNP-0.3 NA. Visibility reduction by helicopters NA. When local altimeter setting not received, use Three Rivers altimeter setting and increase all DA/MDA 40 feet; increase LPV visibility all Cats and LNAV Cat C and D ½ mile, increase LNAV/VNAV vis all Cats ¼ mile.</p> | <p>MISSED APPROACH:
Climb to 3000 direct
JETKI and hold.</p> |
|---|---|

AWOS-3 121.325	GREAT LAKES APP CON ★ 121.2 239.25	CLNC DEL 118.325	UNICOM 123.05 (CTAF) 0
--------------------------	--	----------------------------	----------------------------------



ELEV 924		TDZE 915
----------	--	----------

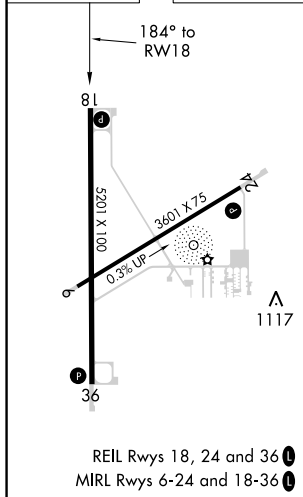


Diagram illustrating the VGSI and RNAV glidepath for RW18. The diagram shows the RNAV glidepath (ZUGDA) and the VGSI glidepath (UKANE) intersecting at a 2500-foot altitude. The RNAV glidepath is 4.9 NM from the runway, and the VGSI glidepath is 6.1 NM from the runway. The RNAV glidepath angle is 184°, and the VGSI glidepath angle is 004°. The diagram also shows the RW18 runway and the VGSI Angle 3.00/TCH 27.

RNAV (GPS) RWY 18