

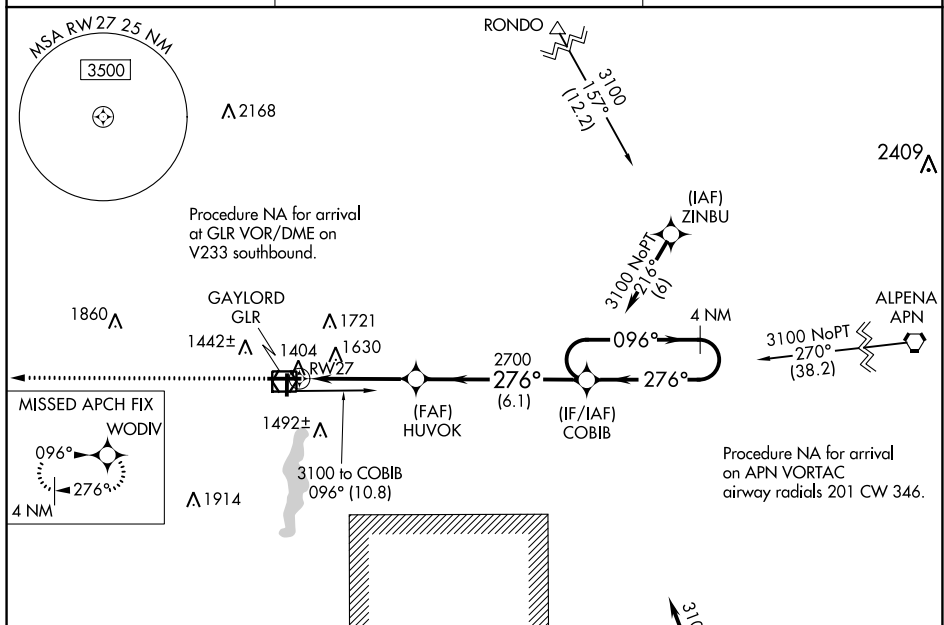
WAAS CH 56327 W27A	APP CRS 276°	Rwy Idg 6579 TDZE 1328 Apt Elev 1328
--	------------------------	---

RNAV (GPS) RWY 27
GAYLORD RGNL (GLR)

A Circling to Rwy 18 and Rwy 36 NA at night. DME/DME RNP-0.3 NA. When local altimeter setting not received, use Grayling altimeter setting and increase all DA 71 feet and all MDA 80 feet. Increase LNAV and Circling Cats C and D visibility $\frac{1}{4}$ mile. Rwy 27 Helicopter visibility reduction below $\frac{3}{4}$ SM NA.

MISSED APPROACH: Climb to 3000 direct WODIV and hold.

ASOS 118.375	MINNEAPOLIS CENTER 134.6 354.05	UNICOM 122.8 (CTAF) 0
------------------------	---	---------------------------------



CATEGORY	A	B	C	D
LPV DA	1578-1		250 (300-1)	
LNAV MDA	1820-1	492 (500-1)	1820-1 $\frac{3}{8}$	492 (500-1 $\frac{3}{8}$)
CIRCLING	1840-1 512 (600-1)	1940-1 612 (700-1)	1940-1 $\frac{3}{4}$ 612 (700-1 $\frac{3}{4}$)	2080-2 $\frac{1}{2}$ 752 (800-2 $\frac{1}{2}$)