

WAAS CH 97723 W22A	APP CRS 223°	Rwy Idg 5104 TDZE 649 Apt Elev 650
--	------------------------	---

RNAV (GPS) RWY 22
ST CLAIR COUNTY INTL (PHN)

RNP APCH.

- T** Rwy 22 helicopter visibility reduction below 1 SM NA.
A Straight-in Rwy 22 NA at night, Circling Rwy 10, 22, 28 NA at night.

MISSED APPROACH: Climb to 4000 direct HIGIG and hold, continue climb-in-hold to 4000.

AWOS-3 118.375	SELFRRIDGE APP CON ★ 119.6 391.9	UNICOM 123.05 (CTAF) L
--------------------------	--	---

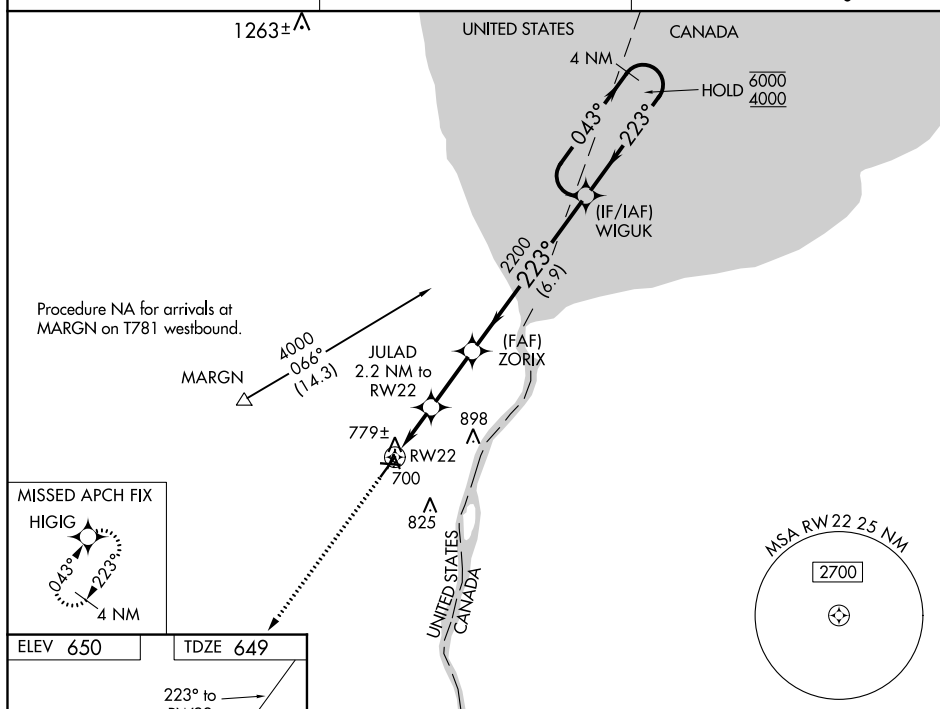


Diagram illustrating the RW22 approach procedure. Key features include:

- Runway 22 (RW22) with a width of 4000 X 75.
- Runway 28 (RW28) with a width of 5104 X 100.
- Runway 10 (RW10) with a width of 4000 X 75.
- Approach path with a 4000 X 75 width.
- 4 NM Holding Pattern.
- VGS1 and VGSI angles: 3.00° TCH 55°.