
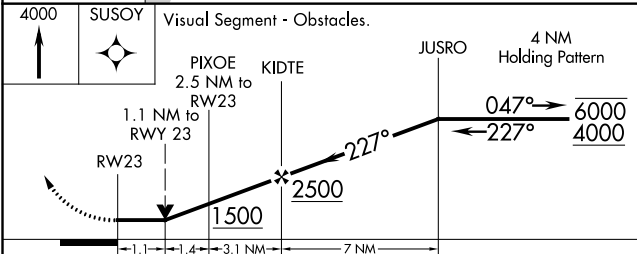
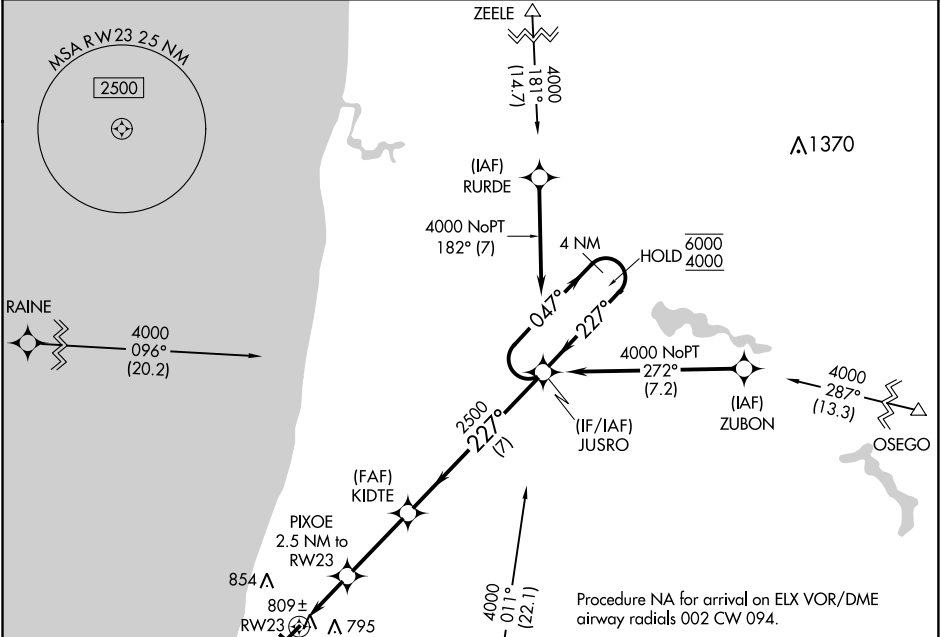


APP CRS	Rwy Idg	4801
227°	TDZE	666
	Apt Elev	666

RNAV (GPS) RWY 23
SOUTH HAVEN AREA RGNL (LWA)

RNP APCH.	MISSED APPROACH: Climb to 4000 direct SUSOY and hold. Continue climb-in-hold to 4000.
 Circling NA to Rwy 14 and 32. Rwy 23 helicopter visibility reduction below 3/4 SM NA.	

AWOS-3 118.025	SOUTH BEND APP CON ★ 118.55 257.8	UNICOM 122.8 (CTAF) 0
-------------------	--------------------------------------	--------------------------



CATEGORY	A	B	C	D
LNNAV MDA	1060-1	394 (400-1)	1060-1 1/8	394 (400-1 1/8)
CIRCLING	1120-1 454 (500-1)	1140-1 474 (500-1)	1440-2 1/4 774 (800-2 1/4)	1440-2 1/2 774 (800-2 1/2)

