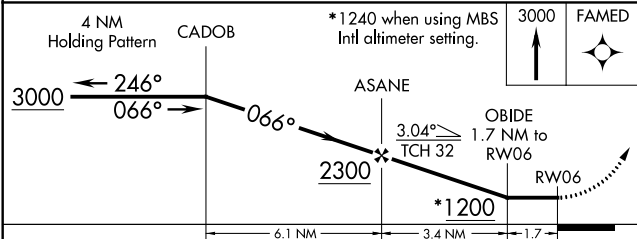
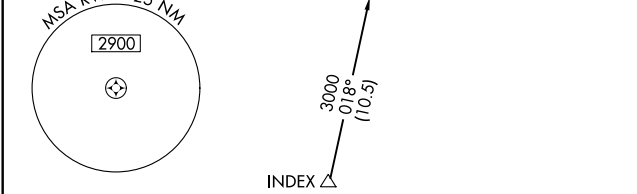
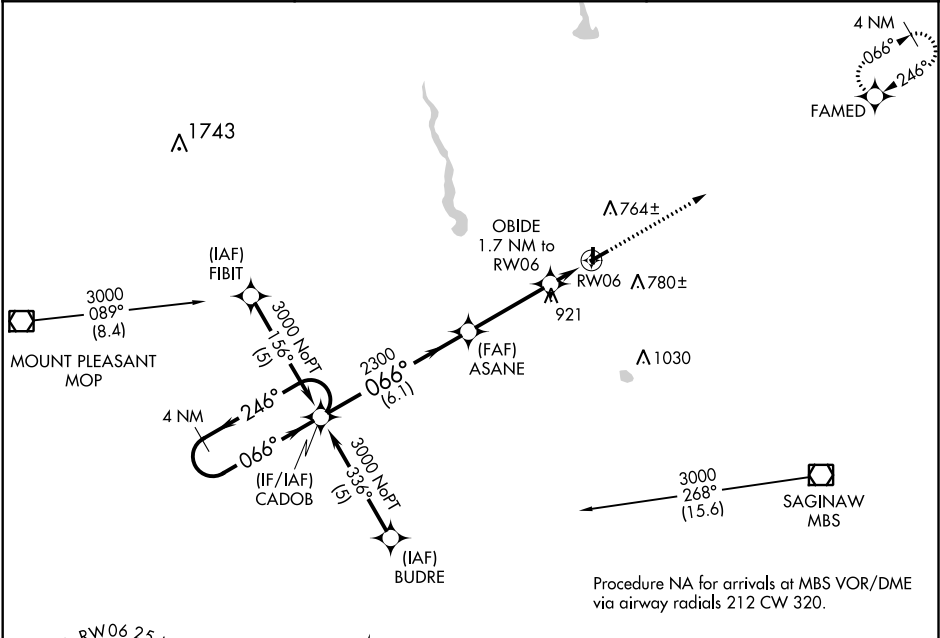


APP CRS	Rwy Idg	3801
066°	TDZE	628
	Apt Elev	635

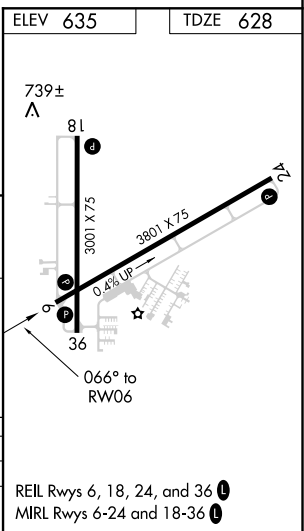
RNAV (GPS) RWY 6
JACK BARSTOW (IKW)

<p>▼ DME/DME RNP-0.3 NA. Rwy 24 helicopter visibility reduction below ¾ SM NA. ▲ When local altimeter setting not received, use MBS Intl altimeter setting and increase all MDA 40 feet and LNAV Cat C visibility ¼ mile. Circling Rwy 18, 36 NA at night.</p>	<p>MISSED APPROACH: Climb to 3000 direct FAMED and hold.</p>
--	--

AWOS-3 119.525	GREAT LAKES APP CON ★ 126.45 235.625	UNICOM 122.8 (CTAF) 0
-------------------	---	--------------------------



CATEGORY	A	B	C	D
LNAV MDA	1000-1	372 (400-1)		NA
CIRCLING	1120-1	485 (500-1)	1120-1½ 485 (500-1½)	NA



EC-1, 31 DEC 2020 to 28 JAN 2021

EC-1, 31 DEC 2020 to 28 JAN 2021