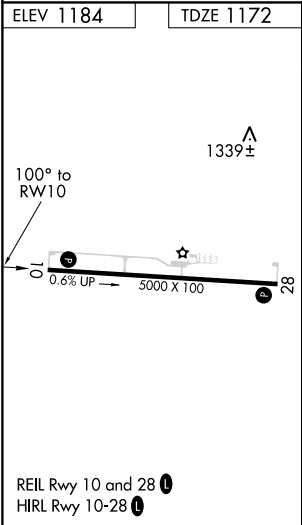
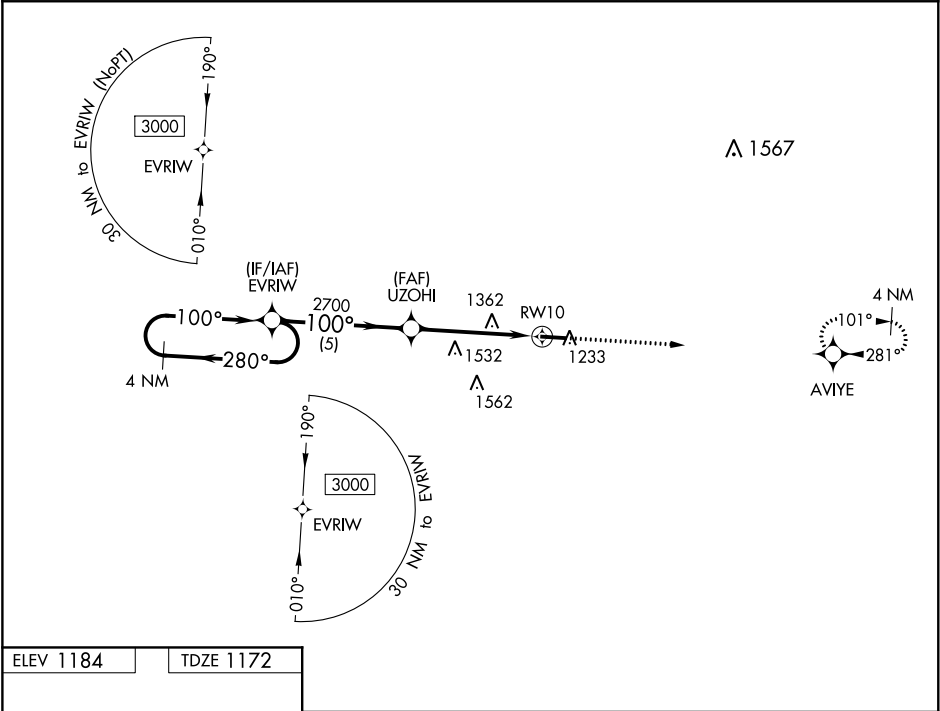


WAAS CH 77534 W10A	APP CRS 100°	Rwy ldg TDZE 1172 Apt Elev 1184	5000
--	------------------------	---	-------------

RNAV (GPS) RWY 10

HILLSDALE MUNI (JYM)

▼ For uncompensated Baro-VNAV systems, LNAV/VNAV NA below -17°C (2°F) or above 54°C (130°F). DME/DME RNP-0.3 NA.		MISSED APPROACH: Climb to 3100 direct AVIYE and hold.
AWOS-3 121.025	TOLEDO APP CON 134.35 317.55	UNICOM 122.8 (CTAF) 0



4 NM Holding Pattern		3100 AVIYE	
EVRIW		UZOHI	
3000 ← 280° 100° →		2700 100°	
GP 3.00° TCH 46		*1.6 NM to RWY10	
5 NM		3.1 NM	
1.6 NM		RWY10	
CATEGORY	A	B	C
LPV DA	1441-1	269 (300-1)	NA
LNAV/VNAV DA	1601-1½	429 (500-1½)	NA
LNAV MDA	1720-1 548 (600-1)	1720-1½ 548 (600-1½)	NA
CIRCLING	1720-1 536 (600-1)	1720-1½ 536 (600-1½)	NA