

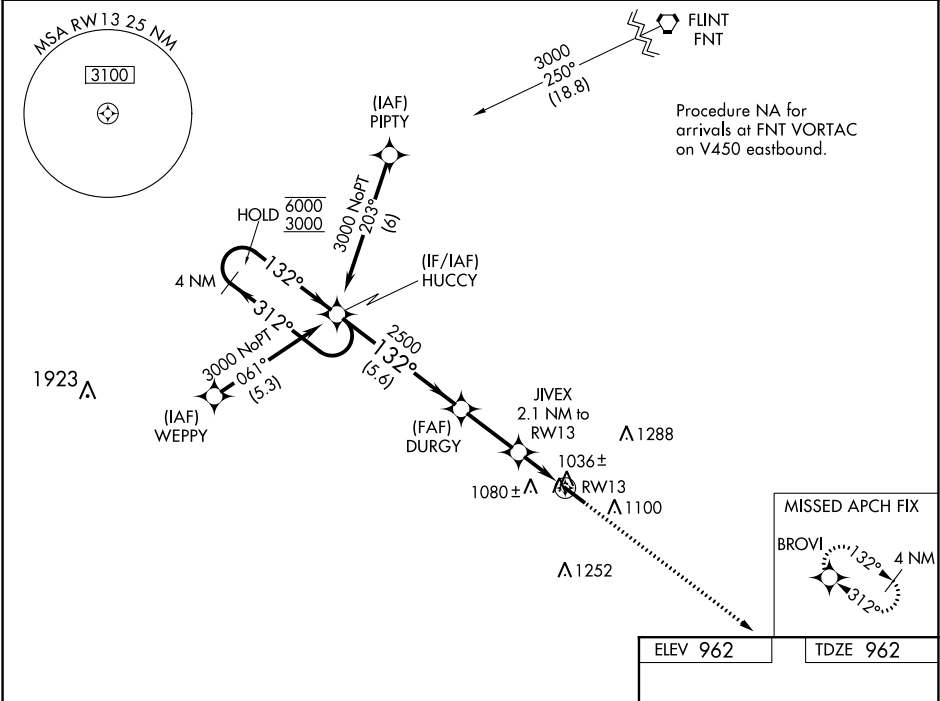
WAAS CH 69601 W13A	APP CRS 132°	Rwy Idg 5002 TDZE 962 Apt Elev 962
--	------------------------	---

RNAV (GPS) RWY 13

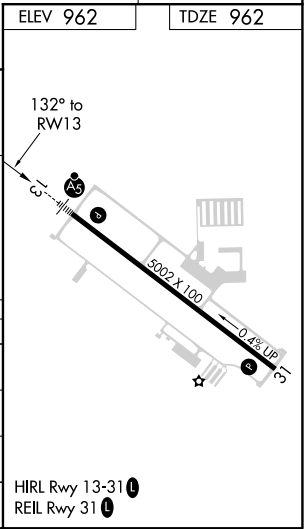
LIVINGSTON COUNTY SPENCER J HARDY (OZW)

RNP APCH.	MALSR	MISSED APPROACH: Climb to 2800 direct BROVI and hold.
▼ For uncompensated Baro-VNAV systems, LNAV/VNAV NA below -1.6°C or above 37°C. For inop ALS, increase LNAV/VNAV all Cats visibility to ¾ SM.		

AWOS-3 118.875	DETROIT APP CON 132.35 284.0	CLNC DEL 121.725 (GCO)	UNICOM 123.0 (CTAF) 0
--------------------------	--	----------------------------------	---------------------------------



<p>4 NM Holding Pattern</p> <p>HUCCY</p> <p>DURGY</p> <p>JIVEX 2.1 NM to RWY13</p> <p>*LNAV only</p> <p>2800</p> <p>BROVI</p> <p>6000 ← 312°</p> <p>3000 → 132°</p> <p>132°</p> <p>2500</p> <p>*1660</p> <p>GP 3.00° TCH 48</p> <p>5.6 NM</p> <p>2.6 NM</p> <p>1.2</p> <p>0.9</p> <p>RWY13</p>				
CATEGORY	A	B	C	D
LPV DA	1162-½ 200 (200-½)			
LNAV/VNAV DA	1212-½ 250 (300-½)			
LNAV MDA	1300-½ 338 (400-½)			
CIRCLING	1400-1 438 (500-1)	1420-1 458 (500-1)	1420-1½ 458 (500-1½)	1520-2 558 (600-2)



EC-1, 31 DEC 2020 to 28 JAN 2021

EC-1, 31 DEC 2020 to 28 JAN 2021