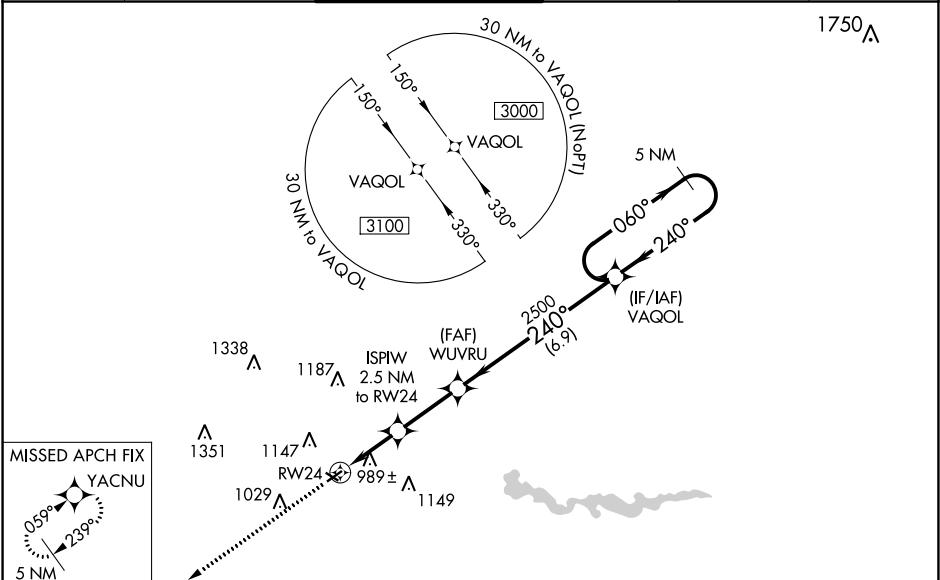


WAAS CH 61120 W24A	APP CRS 240°	Rwy Idg TDZE Apt Elev	3505 831 839	RNAV (GPS) RWY 24 ANN ARBOR MUNI (ARB)
--	------------------------	-----------------------------	---	--

RNP APCH.	<div><div><div>▼</div><div>▲</div></div><div>For uncompensated Baro-VNAV systems, LNAV/VNAV NA below -16°C or above 38°C. Baro-VNAV NA when using Willow Run altimeter setting. Rwy 24 helicopter visibility reduction below ¾ SM NA. When local altimeter setting not received, use Willow Run altimeter setting and increase all DA/MDA 40 feet.</div></div>	MISSED APPROACH: Climb to 3000 direct YACNU and hold.
-----------	--	---

ATIS 134.55	DETROIT APP CON 118.95 284.0	ANN ARBOR TOWER ★ 120.3 (CTAF) 0	GND CON 121.6	CLNC DEL 121.6	UNICOM 123.0
-----------------------	--	---	-------------------------	--------------------------	------------------------



ELEV 839	TDZE 831				
*LNAV only.		VGSI and RNAV glidepath not coincident (VGSI Angle 3.00/TCH 20).			
RW24		VAQOL			
ISPIW 2.5 NM to RW24		WUVRU 2500			
1660*		2500			
2.5 NM		2.6 NM		6.9 NM	
CATEGORY	A	B	C	D	
LPV DA	1081-1 250 (300-1)				
LNAV/VNAV DA	1155-1 324 (400-1)				
LNAV MDA	1300-1 469 (500-1)		1300-1¼ 469 (500-1¼)		