

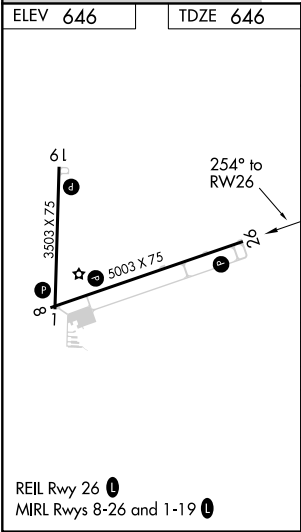
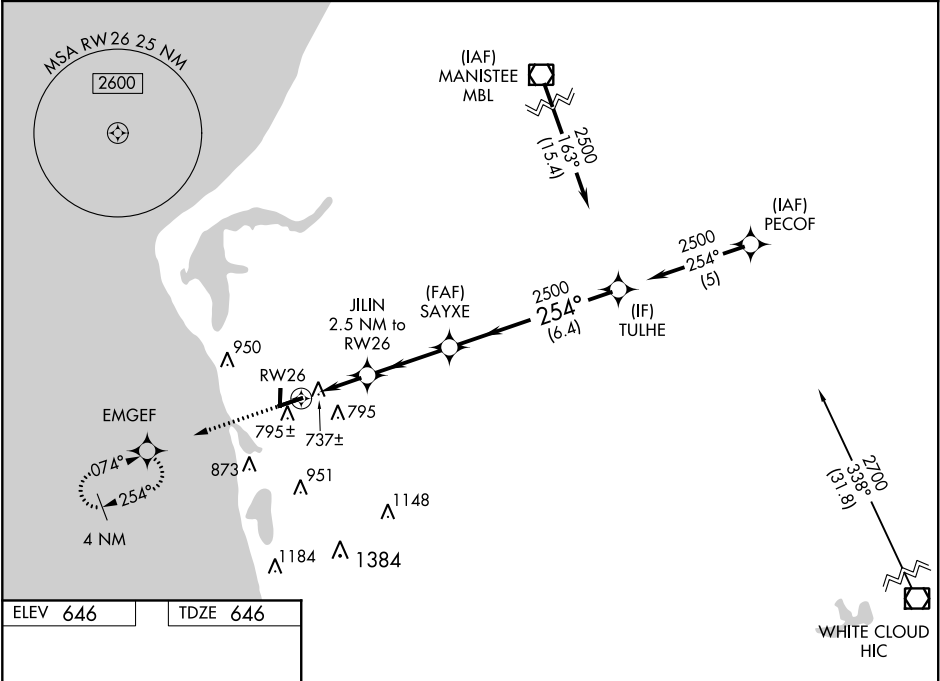
WAAS CH 49206 W26A	APP CRS 254°	Rwy Idg TDZE 646 Apt Elev 646
--	------------------------	---

RNAV (GPS) RWY 26

MASON COUNTY (LDM)

RNP APCH.		MISSED APPROACH: Climb to 2500 direct EMGEF and hold.
<div><div></div><div>Circling Rwy 1, 19 NA at night. Rwy 26 helicopter visibility reduction below ¾ SM NA. For uncompensated Baro-VNAV systems, LNAV/VNAV NA below -16°C or above 54°C.</div></div>		

AWOS-3 119.925	MINNEAPOLIS CENTER 120.85 322.35	UNICOM 123.0 (CTAF) 0
--------------------------	--	---------------------------------



2500		EMGEF	VGSI and RNAV glidepath not coincident (VGSI Angle 3.00/TCH 25).	
*LNAV only.		JILIN 2.5 NM to RW26	SAYXE 2500	TULHE
*1 NM to RW26		254°		2500
RW26		*1480		GP 3.00° TCH 40
1 NM		1.5	3.1 NM	6.4 NM
CATEGORY	A	B	C	D
LPV DA	975-1¼		329 (400-1¼)	
LNAV/ VNAV DA	1020-1¼		374 (400-1¼)	
LNAV MDA	1000-1		354 (400-1)	
CIRCLING		1160-1	514 (600-1)	1200-1½ 554 (600-1½)
				1300-2 654 (700-2)