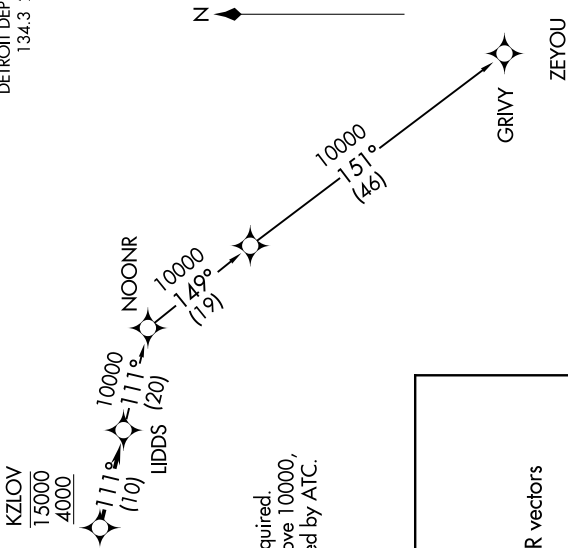


EC-1, 31 DEC 2020 to 28 JAN 2021

TOP ALTITUDE:
ASSIGNED BY ATC

AWOS-3
119.075
CTAF
122.7
DETROIT DEP CON
134.3 284.0



TAKEOFF MINIMUMS:
Standard.

NOTE: RNAV 1.
NOTE: RADAR required.
NOTE: DME/DME/IRU or GPS required.
NOTE: Turbojet departures at/above 10000,
maintain 280K until advised by ATC.

DEPARTURE ROUTE DESCRIPTION

TAKEOFF RUNWAY 3: Climb on heading 027° or as assigned for RADAR vectors to cross KZLOV between 4000 and 15000, thence....
TAKEOFF RUNWAY 21: Climb on heading 208° or as assigned for RADAR vectors to cross KZLOV between 4000 and 15000, thence....
....on track 111° to LIDDS, then on (transition). Maintain ATC assigned altitude, expect filed altitude 10 minutes after departure.
GRIVY TRANSITION (LIDDS2.GRIVY):

NOTE: Chart not to scale.

EC-1, 31 DEC 2020 to 28 JAN 2021