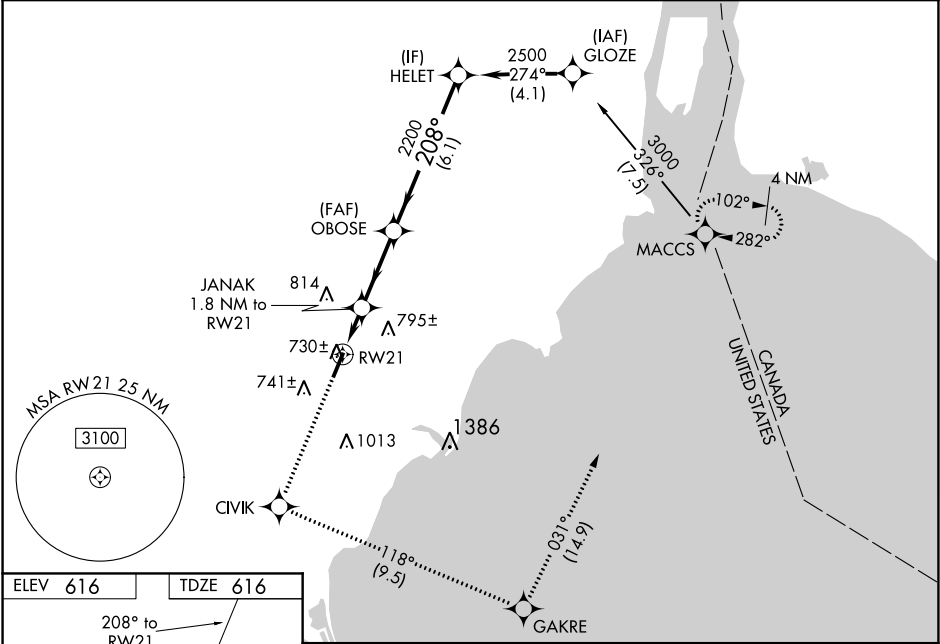


WAAS CH 86707 W21A	APP CRS 208°	Rwy Idg TDZE 616 Apt Elev 616	4997
--	------------------------	---	-------------

RNAV (GPS) RWY 21
CUSTER (TTF)

RNP APCH. <div>For uncompensated Baro-VNAV systems, LNAV/VNAV NA below -16°C (4°F) or above 47°C (116°F). When local altimeter setting not received, use Detroit Metropolitan Wayne County altimeter setting and increase LPV DA 43 feet and all visibilities ¼ SM, LNAV/VNAV DA 138 feet and all visibilities ½ SM and all MDA 60 feet and Cat C visibilities ¼ SM. Baro-VNAV and VDP NA when using Detroit Metropolitan Wayne County altimeter setting.</div>		MISSED APPROACH: Climb to 3000 direct CIVIK and on track 118° to GAKRE and on track 031° to MACCS and hold.
AWOS-3 119.075	DETROIT APP CON 134.3 363.2	UNICOM 122.7 (CTAF)



ELEV 616	TDZE 616	3000 CIVIK				3000 GAKRE	3000 MACCS	VGSI and RNAV glidepath not coincident (VGSI Angle 3.50/TCH 49).				HELET
208° to RW21		↑		tr 118°	tr 031°	OBOSE		2200				2500
* LNAV only.		* 0.9 NM to RW21		* 1.8 NM to RW21		* 1220		GP 3.00° TCH 42				
0.9 NM		0.9 NM		3 NM		6.1 NM						
CATEGORY		A		B		C		D				
LPV DA		966-1¼		350 (400-1¼)								
LNAV/VNAV DA		1009-1½		393 (400-1½)								
LNAV MDA		980-1		364 (400-1)		980-1¼		364 (400-1¼)				
CIRCLING		1120-1 504 (600-1)		1180-1 564 (600-1)		1180-1½ 564 (600-1½)		1180-2 564 (600-1)				