

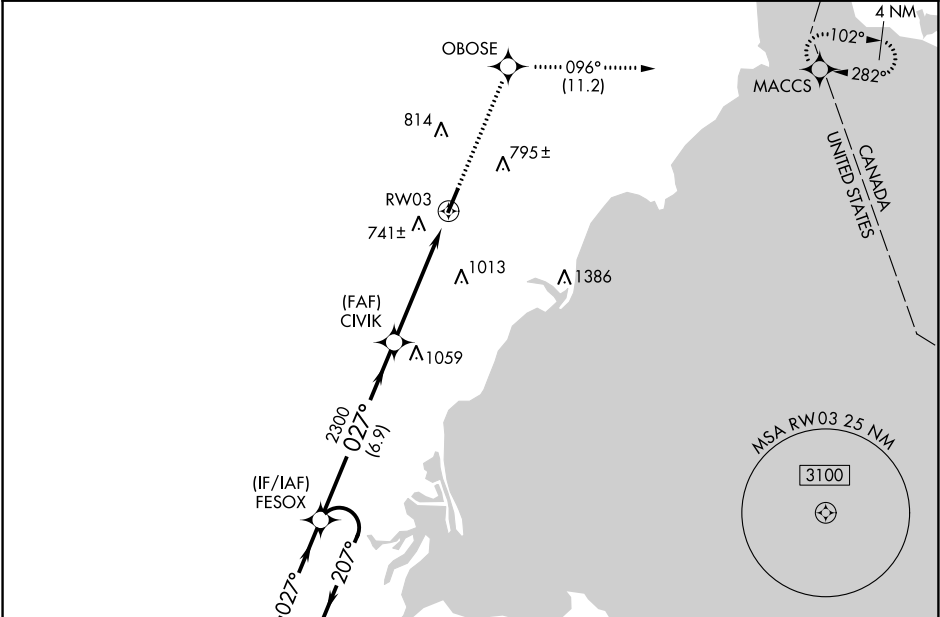
APP CRS	Rwy Idg	4997
027°	TDZE	614
	Apt Elev	616

RNAV (GPS) RWY 3

CUSTER (TTF)

RNP APCH.	When local altimeter setting not received, use Detroit Metropolitan Wayne County altimeter setting and increase all MDA 60 feet, LNAV Cat C/D visibility ¼ SM, and Circling Cat C visibility ¼ SM. Rwy 3 helicopter visibility reduction below 1 SM NA. Straight-in Rwy 3 NA at night.	MISSED APPROACH: Climb to 3000 direct OBOSE and on track 096° to MACCS and hold.
-----------	--	--

AWOS-3 119.075	DETROIT APP CON 134.3 363.2	UNICOM 122.7 (CTAF) 0
-------------------	--------------------------------	--------------------------



ELEV 616 TDZE 614

REIL Rwy 21 1
MRL Rwy 3-21 1

4 NM Holding Pattern

FESOX

3000

207°

027°

027°

VGSI and descent angles not coincident (VGSI Angle 4.00/TCH 58).

2300

3.04°

TCH 40

6.9 NM

5.1 NM

3000

OBOSE

tr 096°

MACCS

CIVIK

RWY 03

CATEGORY	A	B	C	D
LNAV MDA	1100-1	486 (500-1)	1100-1¼ 486 (500-1¼)	1100-1½ 486 (500-1½)
CIRCLING	1120-1 504 (600-1)	1180-1 564 (600-1)	1180-1½ 564 (600-1½)	1180-2 564 (600-2)

EC-1, 31 DEC 2020 to 28 JAN 2021

EC-1, 31 DEC 2020 to 28 JAN 2021