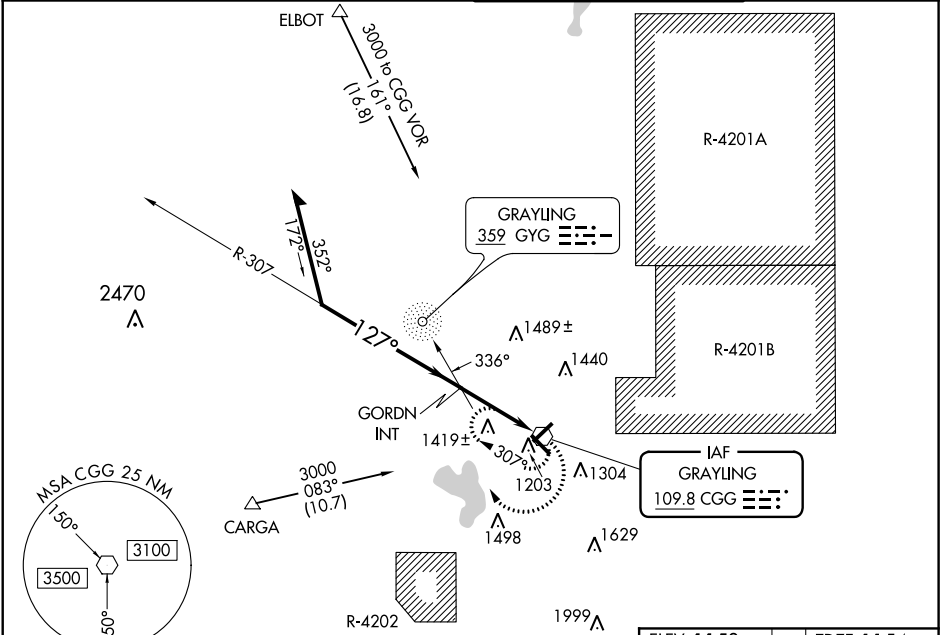


VOR CGG	APP CRS	Rwy Idg	5005
109.8	127°	TDZE	1154
		Apt Elev	1158

VOR RWY 14
GRAYLING AAF (GOV)

<p>▼ Rwy 14 helicopter visibility reduction below ¾ SM NA. Circling Rwy 5, 23, 32 NA at night. When local altimeter setting not received, use Houghton Lake altimeter setting and increase all MDAs 60 feet and visibility S-14 and Circling Cat B/C/D ½ SM and GORDN fix minimums S-14 and Circling Cat C ½ SM.</p>	<p>MISSED APPROACH: Climbing right turn to 3500 in CGG VOR holding pattern.</p>
--	---

ATIS 119.075	MINNEAPOLIS CENTER 125.475 269.45	GRAYLING TOWER ★ 126.2 (CTAF) 0	GND CON 121.9
-----------------	--------------------------------------	------------------------------------	------------------



ELEV 1158		TDZE 1154	
Remain within 10 NM		CGG VOR 6000	
2800		GORDN INT	
127°		*1880	
3.1 NM		0.3	
CATEGORY		A	
S-14		1880-1 726 (800-1)	
CIRCLING		1880-1 722 (800-1)	
GORDN FIX MINIMUMS		C	
S-14		1720-1 566 (600-1)	
CIRCLING		1720-1 562 (600-1)	
CATEGORY		B	
S-14		1880-2 726 (800-2)	
CIRCLING		1880-2 722 (800-2)	
CATEGORY		C	
S-14		1880-2 726 (800-2)	
CIRCLING		1880-2 722 (800-2)	
CATEGORY		D	
S-14		1880-2 726 (800-2)	
CIRCLING		1880-2 722 (800-2)	
CATEGORY		E	
S-14		1880-2 726 (800-2)	
CIRCLING		1880-2 722 (800-2)	
CATEGORY		F	
S-14		1880-2 726 (800-2)	
CIRCLING		1880-2 722 (800-2)	
CATEGORY		G	
S-14		1880-2 726 (800-2)	
CIRCLING		1880-2 722 (800-2)	
CATEGORY		H	
S-14		1880-2 726 (800-2)	
CIRCLING		1880-2 722 (800-2)	
CATEGORY		I	
S-14		1880-2 726 (800-2)	
CIRCLING		1880-2 722 (800-2)	
CATEGORY		J	
S-14		1880-2 726 (800-2)	
CIRCLING		1880-2 722 (800-2)	
CATEGORY		K	
S-14		1880-2 726 (800-2)	
CIRCLING		1880-2 722 (800-2)	
CATEGORY		L	
S-14		1880-2 726 (800-2)	
CIRCLING		1880-2 722 (800-2)	
CATEGORY		M	
S-14		1880-2 726 (800-2)	
CIRCLING		1880-2 722 (800-2)	
CATEGORY		N	
S-14		1880-2 726 (800-2)	
CIRCLING		1880-2 722 (800-2)	
CATEGORY		O	
S-14		1880-2 726 (800-2)	
CIRCLING		1880-2 722 (800-2)	
CATEGORY		P	
S-14		1880-2 726 (800-2)	
CIRCLING		1880-2 722 (800-2)	
CATEGORY		Q	
S-14		1880-2 726 (800-2)	
CIRCLING		1880-2 722 (800-2)	
CATEGORY		R	
S-14		1880-2 726 (800-2)	
CIRCLING		1880-2 722 (800-2)	
CATEGORY		S	
S-14		1880-2 726 (800-2)	
CIRCLING		1880-2 722 (800-2)	
CATEGORY		T	
S-14		1880-2 726 (800-2)	
CIRCLING		1880-2 722 (800-2)	
CATEGORY		U	
S-14		1880-2 726 (800-2)	
CIRCLING		1880-2 722 (800-2)	
CATEGORY		V	
S-14		1880-2 726 (800-2)	
CIRCLING		1880-2 722 (800-2)	
CATEGORY		W	
S-14		1880-2 726 (800-2)	
CIRCLING		1880-2 722 (800-2)	
CATEGORY		X	
S-14		1880-2 726 (800-2)	
CIRCLING		1880-2 722 (800-2)	
CATEGORY		Y	
S-14		1880-2 726 (800-2)	
CIRCLING		1880-2 722 (800-2)	
CATEGORY		Z	
S-14		1880-2 726 (800-2)	
CIRCLING		1880-2 722 (800-2)	
CATEGORY		AA	
S-14		1880-2 726 (800-2)	
CIRCLING		1880-2 722 (800-2)	
CATEGORY		AB	
S-14		1880-2 726 (800-2)	
CIRCLING		1880-2 722 (800-2)	
CATEGORY		AC	
S-14		1880-2 726 (800-2)	
CIRCLING		1880-2 722 (800-2)	
CATEGORY		AD	
S-14		1880-2 726 (800-2)	
CIRCLING		1880-2 722 (800-2)	
CATEGORY		AE	
S-14		1880-2 726 (800-2)	
CIRCLING		1880-2 722 (800-2)	
CATEGORY		AF	
S-14		1880-2 726 (800-2)	
CIRCLING		1880-2 722 (800-2)	
CATEGORY		AG	
S-14		1880-2 726 (800-2)	
CIRCLING		1880-2 722 (800-2)	
CATEGORY		AH	
S-14		1880-2 726 (800-2)	
CIRCLING		1880-2 722 (800-2)	
CATEGORY		AI	
S-14		1880-2 726 (800-2)	
CIRCLING		1880-2 722 (800-2)	
CATEGORY		AJ	
S-14		1880-2 726 (800-2)	
CIRCLING		1880-2 722 (800-2)	
CATEGORY		AK	
S-14		1880-2 726 (800-2)	
CIRCLING		1880-2 722 (800-2)	
CATEGORY		AL	
S-14		1880-2 726 (800-2)	
CIRCLING		1880-2 722 (800-2)	
CATEGORY		AM	
S-14		1880-2 726 (800-2)	
CIRCLING		1880-2 722 (800-2)	
CATEGORY		AN	
S-14		1880-2 726 (800-2)	
CIRCLING		1880-2 722 (800-2)	
CATEGORY		AO	
S-14		1880-2 726 (800-2)	
CIRCLING		1880-2 722 (800-2)	
CATEGORY		AP	
S-14		1880-2 726 (800-2)	
CIRCLING		1880-2 722 (800-2)	
CATEGORY		AQ	
S-14		1880-2 726 (800-2)	
CIRCLING		1880-2 722 (800-2)	
CATEGORY		AR	
S-14		1880-2 726 (800-2)	
CIRCLING		1880-2 722 (800-2)	
CATEGORY		AS	
S-14		1880-2 726 (800-2)	
CIRCLING		1880-2 722 (800-2)	
CATEGORY		AT	
S-14		1880-2 726 (800-2)	
CIRCLING		1880-2 722 (800-2)	
CATEGORY		AU	
S-14		1880-2 726 (800-2)	
CIRCLING		1880-2 722 (800-2)	
CATEGORY		AV	
S-14		1880-2 726 (800-2)	
CIRCLING		1880-2 722 (800-2)	
CATEGORY		AW	
S-14		1880-2 726 (800-2)	
CIRCLING		1880-2 722 (800-2)	
CATEGORY		AX	
S-14		1880-2 726 (800-2)	
CIRCLING		1880-2 722 (800-2)	
CATEGORY		AY	
S-14		1880-2 726 (800-2)	
CIRCLING		1880-2 722 (800-2)	
CATEGORY		AZ	
S-14		1880-2 726 (800-2)	
CIRCLING		1880-2 722 (800-2)	
CATEGORY		BA	
S-14		1880-2 726 (800-2)	
CIRCLING		1880-2 722 (800-2)	
CATEGORY		BB	
S-14		1880-2 726 (800-2)	
CIRCLING		1880-2 722 (800-2)	
CATEGORY		BC	
S-14		1880-2 726 (800-2)	
CIRCLING		1880-2 722 (800-2)	
CATEGORY		BD	
S-14		1880-2 726 (800-2)	
CIRCLING		1880-2 722 (800-2)	
CATEGORY		BE	