

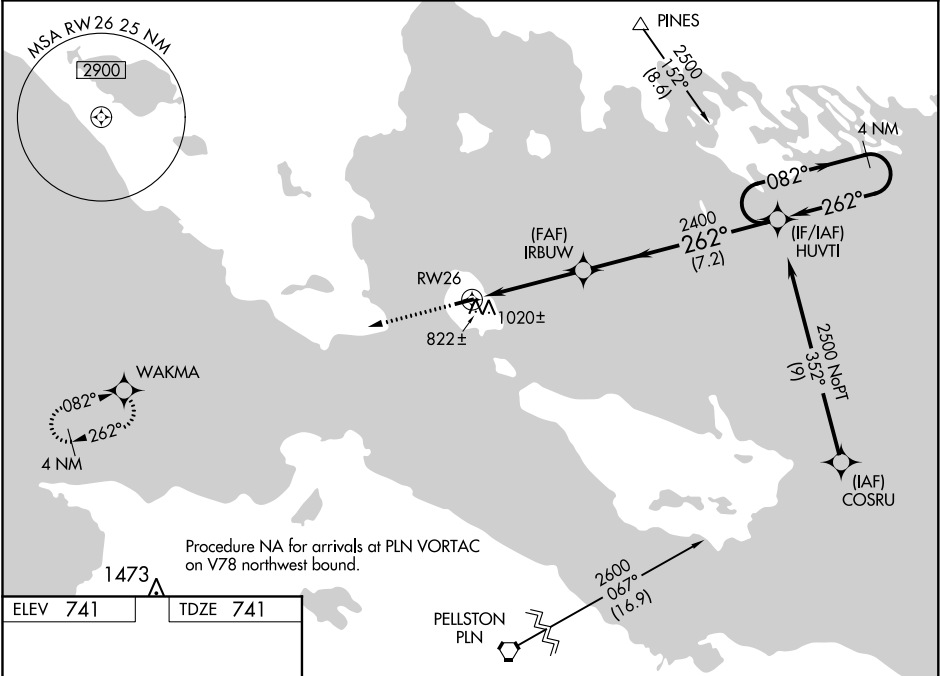
WAAS CH 99529 W26A	APP CRS 262°	Rwy Idg 3501 TDZE 741 Apt Elev 741
--	------------------------	---

RNAV (GPS) RWY 26
MACKINAC ISLAND (MCD)

⚠ Baro-VNAV NA when using Pellston altimeter setting. For uncompensated Baro-VNAV systems, LNAV/VNAV NA below -16°C (4°F) or above 54°C (130°F). When local altimeter setting not received, use Pellston altimeter setting and increase all DA 47 feet and all MDA 60 feet, increase LNAV Cat C visibility 1/8 mile and Circling Cat C visibility 1/4 mile. DME/DME RNP-0.3 NA. Helicopter visibility reduction below 1 SM NA. Night landing: Rwy 8 NA.

MISSED APPROACH:
Climb to 2500 direct WAKMA and hold.

AWOS-3 118.275	MINNEAPOLIS CENTER 134.6 354.05	UNICOM 122.7 (CTAF)	122.80
--------------------------	---	-------------------------------	---------------



ELEV **741** TDZE **741**

Procedure NA for arrivals at PLN VORTAC on V78 northwest bound.

1473

PELLSTON PLN

2600 067° (16.9)

WAKMA

2500

262° to RWY26

3501 X 75

0.4% UP

MIRL Rwy 8-26 **1**

REIL Rwy 8 and 26 **1**

2500 WAKMA		4 NM Holding Pattern	
IRBUW 2400		HUVTI	
RWY26		082° 2500	
2400		GP 3.70° TCH 40	
4.1 NM		7.2 NM	
CATEGORY	A	B	C D
LPV DA	1058-1	317 (400-1)	NA
LNAV/VNAV DA	1182-1 3/8	441 (500-1 3/8)	NA
LNAV MDA	1280-1	539 (600-1)	1280-1 1/2 539 (600-1 1/2) NA
CIRCLING	1320-1	579 (600-1)	1320-1 1/2 579 (600-1 1/2) NA

EC-1, 31 DEC 2020 to 28 JAN 2021

EC-1, 31 DEC 2020 to 28 JAN 2021