

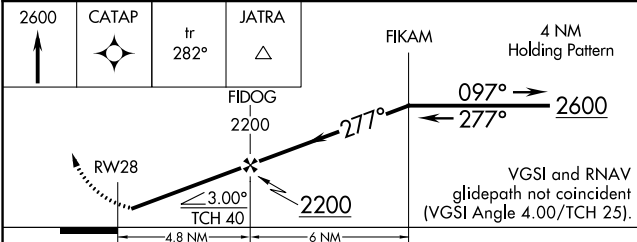
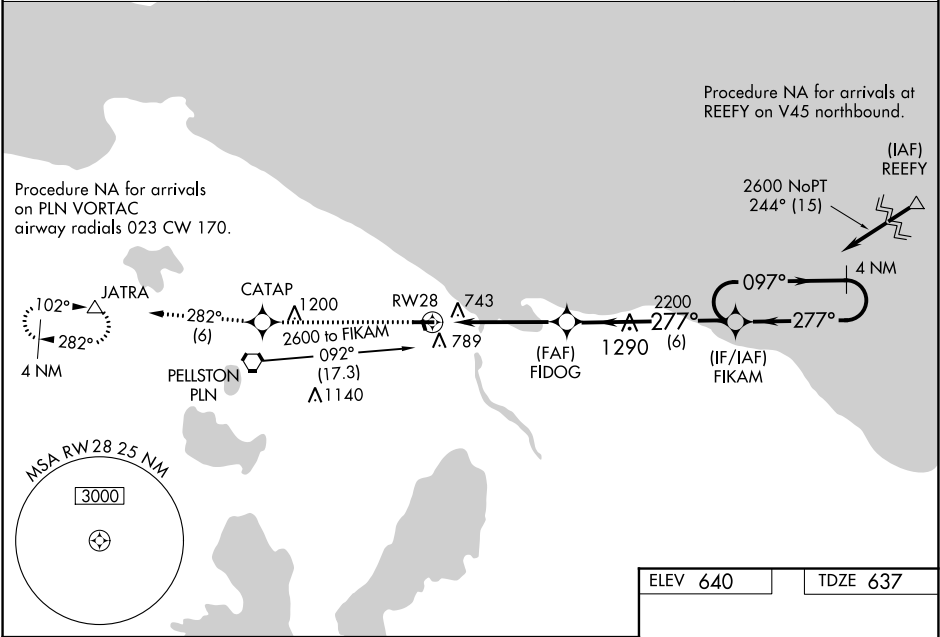
WAAS CH 99727 W28A	APP CRS 277°	Rwy Idg TDZE Apt Elev	4005 637 640
--	------------------------	-----------------------------	---

RNAV (GPS) RWY 28

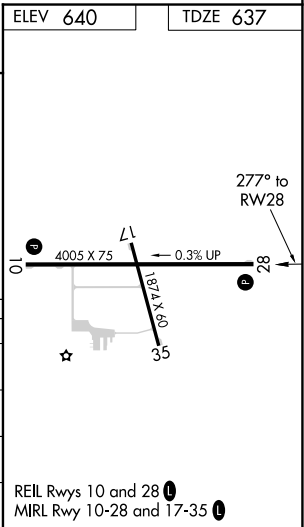
CHEBOYGAN COUNTY (SLH)

RNP APCH.	<div><div><div></div><div></div></div><div>Night landing Rwy 17, 35 NA. Baro-VNAV NA when using Pellston altimeter setting. For uncompensated Baro-VNAV systems, LNAV/VNAV NA below -16°C (4°F) or above 54°C (130°F). Helicopter visibility reduction below ¾ SM NA. When local altimeter setting not received, use Pellston altimeter setting; increase all DA 41 feet and all MDA 60 feet and increase LNAV/VNAV all Cats visibility ¼ SM and LNAV Cat C visibility ½ SM.</div></div>	MISSED APPROACH: Climb to 2600 direct CATAP and on track 282° to JATRA and hold.
-----------	--	--

AWOS-3 118.175	MINNEAPOLIS CENTER 134.6 354.05	UNICOM 122.8 (CTAF)	122.5
--------------------------	---	-------------------------------	--------------



CATEGORY	A	B	C	D
LPV DA	887-1	250 (300-1)		NA
LNAV/VNAV DA	953-1	316 (400-1)		NA
LNAV MDA	1060-1	423 (500-1)	1060-1¼ 423 (500-1¼)	NA
CIRCLING	1140-1	500 (500-1)	1140-1½ 500 (500-1½)	NA



EC-1, 31 DEC 2020 to 28 JAN 2021

EC-1, 31 DEC 2020 to 28 JAN 2021