

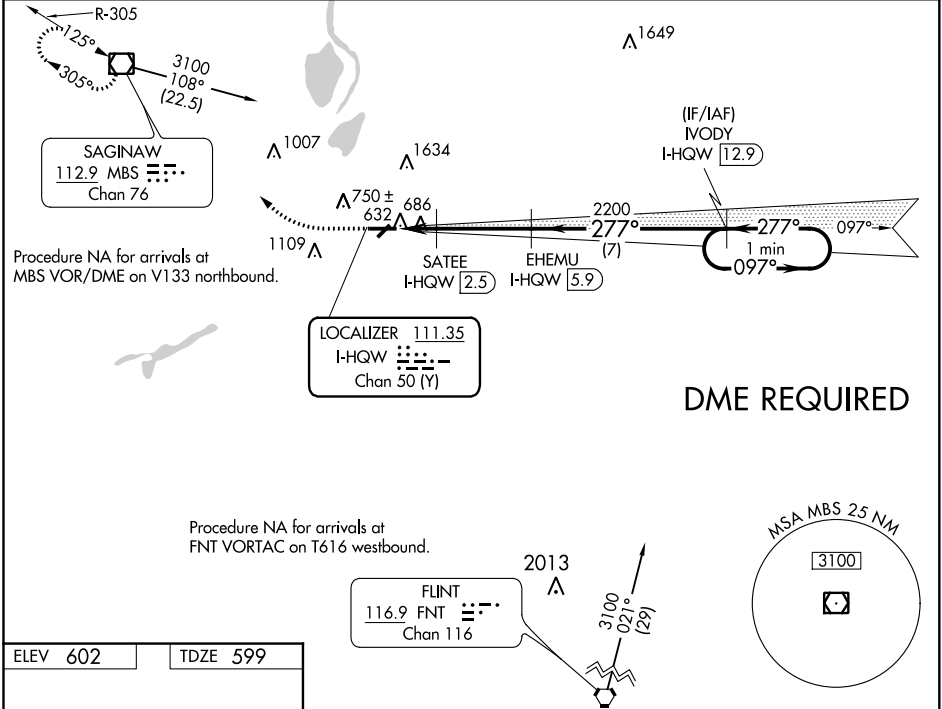
LOC/DME I-HQW 111.35 Chan 50 (Y)	APP CRS 277°	Rwy Idg TDZE Apt Elev	5002 599 602
--	------------------------	-----------------------------	---

ILS or LOC RWY 28

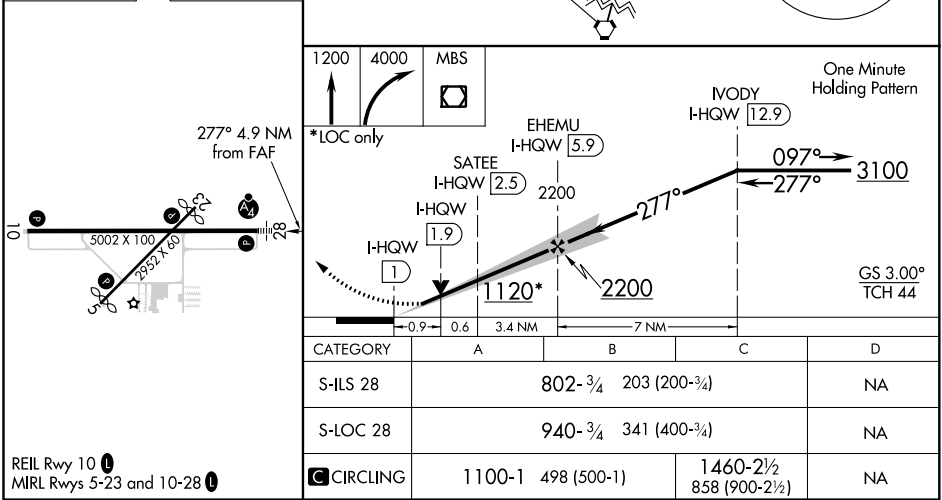
SAGINAW COUNTY H W BROWNE (HYX)

 Inoperative table does not apply to S-ILS 28. DME required. Circling Rwy 5, 23 NA at night. Circling NA for Cat C north of Rwy 10-28.	 MALSF	MISSED APPROACH: Climb to 1200 then climbing right turn to 4000 direct MBS VOR/DME and hold, continue climb-in-hold to 4000.
---	-----------	--

AWOS-3 118.325	GREAT LAKES APP CON★ 120.95 235.625	UNICOM 122.8 (CTAF) 0
--------------------------	---	---------------------------------



ELEV 602	TDZE 599
-----------------	-----------------



ILS or LOC RWY 28

EC-1, 31 DEC 2020 to 28 JAN 2021

EC-1, 31 DEC 2020 to 28 JAN 2021