

VOR/DME MBS  
**112.9**  
Chan **76**

APP CRS  
**125°**

Rwy Idg  
TDZE  
Apt Elev  
**602**

N/A  
N/A  
**602**

VOR/DME-A

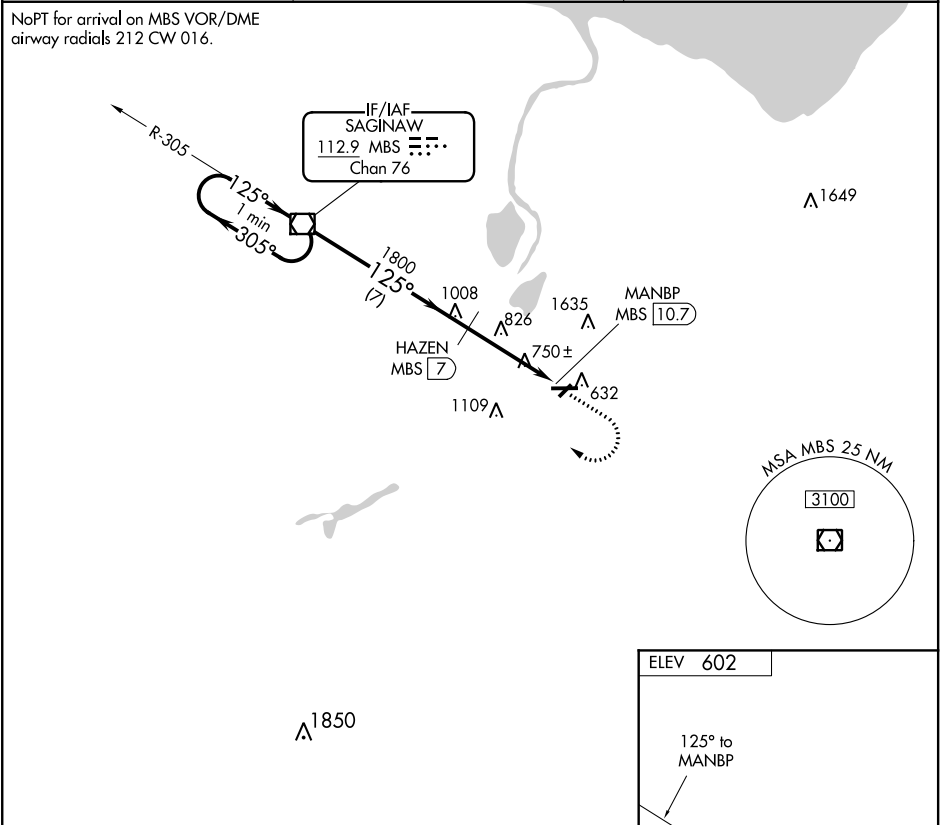
SAGINAW COUNTY H W BROWNE (HYX)

⚠

Circling to Rwy 5/23 NA at night. When local altimeter setting not received, use Saginaw MBS Intl altimeter setting and increase all MDA 40 feet and increase Circling Cat C visibility ¼ SM. Circling NA for Cat C north of Rwy 10-28.

MISSED APPROACH: Climb to 1900 then climbing right turn to 3000 direct MBS VOR/DME and hold.

AWOS-3 <b>118.325</b>	GREAT LAKES APP CON ★ <b>120.95 235.625</b>	UNICOM <b>122.8 (CTAF) 0</b>
--------------------------	--	---------------------------------



One Minute Holding Pattern

MBS VOR/DME

1900

3000

MBS

3000

←305°

→125°

125°

HAZEN MBS 7

1800

MANBP MBS 10.7

7 NM

3.7 NM

CATEGORY	A	B	C	D
CIRCLING	1160-1	558 (600-1)	1460-2½ 858 (900-2½)	NA

ELEV 602

125° to MANBP

10

5002 X 100

7552 X 60

28

REIL Rwy 10 0

MIRL Rwy 5-23 and 10-28 0

EC-1, 31 DEC 2020 to 28 JAN 2021

EC-1, 31 DEC 2020 to 28 JAN 2021