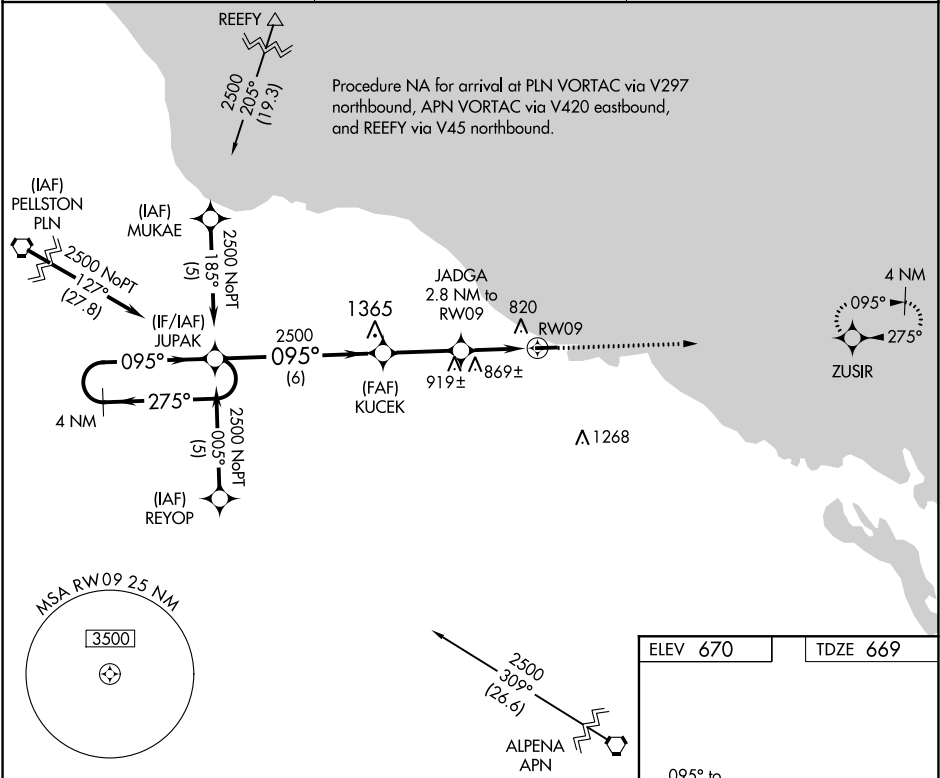


APP CRS	Rwy Idg	3886
095°	TDZE	669
	Apt Elev	670

RNAV (GPS) RWY 9

PRESQUE ISLE COUNTY (PZQ)

RNP APCH.		MISSED APPROACH: Climb to 2300 direct ZUSIR and hold.
▼ ▲ NA If local altimeter setting not received, use Alpena County Rgnl altimeter setting and increase all MDAs 60 feet. Straight-in/Circling Rwy 9 NA at night. Rwy 9 helicopter visibility reduction below 1 SM NA.		
AWOS-3 118.125	ALPENA APP CON ★ 128.425 379.3	CTAF 122.9 0



<div>4 NM Holding Pattern</div> <div><div><div>2500</div><div>← 275°</div><div>095° →</div></div><div><div>JUPAK</div><div>KUCEK</div></div><div><div>2500</div><div>095°</div><div>3.05° TCH 35</div><div>1600</div></div><div><div>JADGA</div><div>2.8 NM to RW09</div><div>RW09</div></div><div><div>6 NM</div><div>2.8 NM</div><div>2.8</div></div></div> <div><div><div>2300</div><div>↑</div></div><div><div>ZUSIR</div><div>✦</div></div></div> <div><div><div>RW09</div><div>4106 X 75</div><div>27</div></div></div>					CATEGORY	A	B	C	D	LNAV MDA	1120-1	451 (500-1)	1120-1¼ 451 (500-1¼)	NA	CIRCLING	1200-1 530 (600-1)	1220-1 550 (600-1)	1220-1½ 550 (600-1½)	NA
CATEGORY	A	B	C	D															
LNAV MDA	1120-1	451 (500-1)	1120-1¼ 451 (500-1¼)	NA															
CIRCLING	1200-1 530 (600-1)	1220-1 550 (600-1)	1220-1½ 550 (600-1½)	NA															

REIL Rwy 9 and 27

MIRL Rwy 9-27

EC-1, 31 DEC 2020 to 28 JAN 2021

EC-1, 31 DEC 2020 to 28 JAN 2021