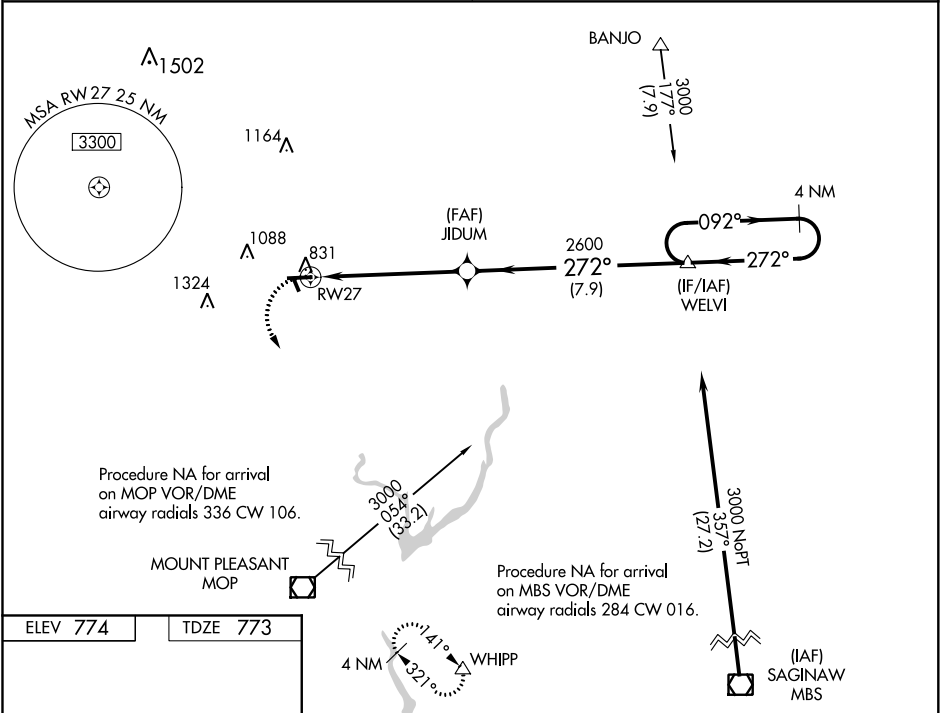


| | | |
|--|------------------------|---|
| WAAS CH 99326 W27A | APP CRS 272° | Rwy Idg TDZE 773 Apt Elev 774 |
|--|------------------------|---|

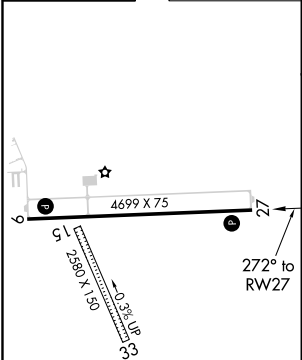
RNAV (GPS) RWY 27
GLADWIN ZETTEL MEMORIAL (GDW)

| | | |
|-----------|--|---|
| RNP APCH. | <p>⚠ NA Circling NA to Rwy 15 and 33. Rwy 27 helicopter visibility reduction below 1 SM NA. DME/DME RNP-0.3 NA. Procedure NA at night. Use Mount Pleasant altimeter setting; when not received, use Midland altimeter setting and increase all MDA 20 feet; increase LP and LNAV Cats C/D visibility 1/8 SM And Circling Cats C/D visibility 1/4 SM.</p> | MISSED APPROACH: Climbing left turn to 2600 direct WHIPP and hold. |
|-----------|--|---|

| | |
|--|---------------------------------|
| GREAT LAKES APP CON ★ 126.45 235.625 | UNICOM 122.8 (CTAF) 0 |
|--|---------------------------------|



| | |
|-----------------|-----------------|
| ELEV 774 | TDZE 773 |
|-----------------|-----------------|



MIRL Rwy 9-27 0
REIL Rwy 9 and 27 0

| | | | | |
|----------|-----------------------|--|-----------------------|-------------------------------|
| 2600 | WHIPP | VGSI and descent angles not coincident (VGSI Angle 3.00/TCH 25). | 4 NM | Holding Pattern |
| | | | | |
| | | | | |
| | | | | |
| CATEGORY | A | B | C | D |
| LP MDA | 1280-1 | 507 (600-1) | 1280-1 3/8 | 507 (600-1 3/8) |
| LNAV MDA | 1280-1 | 507 (600-1) | 1280-1 3/8 | 507 (600-1 3/8) |
| CIRCLING | 1420-1 646 (700-1) | 1500-1 726 (800-1) | 1500-2 726 (800-2) | 1500-2 1/4 726 (800-2 1/4) |