

APP CRS
281°

Rwy Idg
3705

TDZE
686

Apt Elev
686

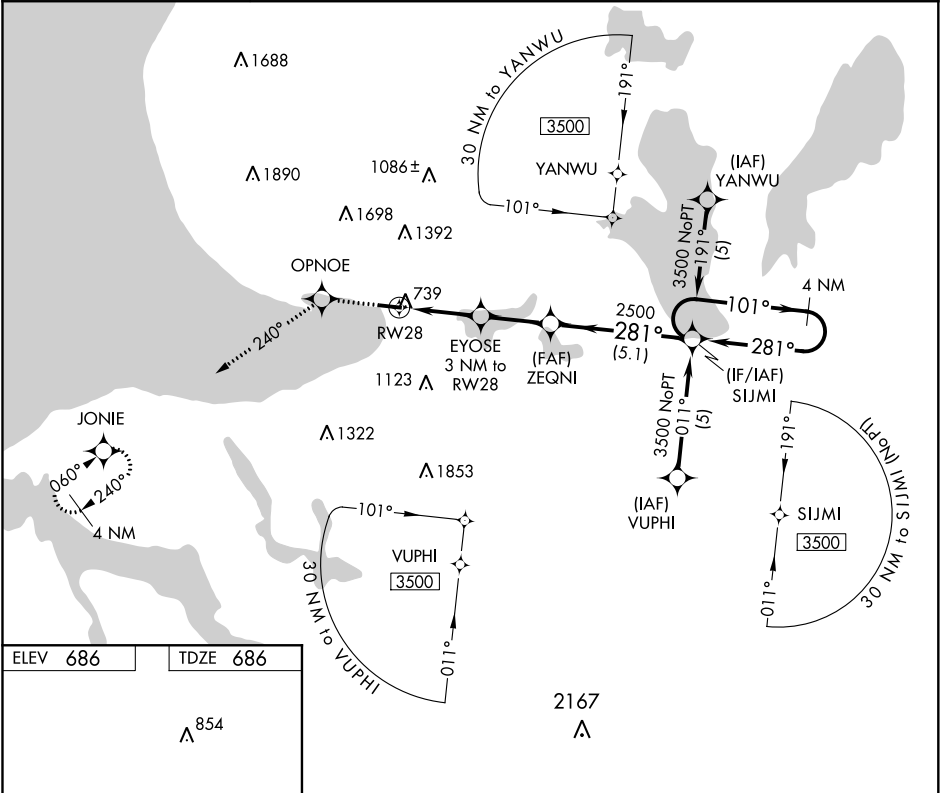
RNAV (GPS) RWY 28
HARBOR SPRINGS (MGN)

⚠

DME/DME RNP-0.3 NA. Helicopter visibility reduction below 1 SM NA. When local altimeter setting not received, use Pellston altimeter setting and increase all MDAs 40 feet. Procedure NA at night.

MISSED APPROACH: Climb to 3400 direct OPNOE and via 240° track to JONIE and hold.

AWOS-3 119.925	MINNEAPOLIS CENTER 134.6 354.05	UNICOM 122.8 (CTAF) 0
-------------------	------------------------------------	--------------------------



ELEV 686

TDZE 686

Λ 854

3400

↑

OPNOE

tr 240°

JONIE

VGSI and descent angles not coincident (VGSI Angle 4.00/TCH 35).

4149 X 75

281° to RW28

3 NM

2.5 NM

5.1 NM

3500

101°

281°

ZEQNI

2500

1680

≤ 3.05°

TCH 35

4 NM Holding Pattern

CATEGORY	A	B	C	D
LNAV MDA	1120-1	434 (500-1)	NA	
CIRCLING	1380-1 694 (700-1)	1500-1¼ 814 (900-1¼)	NA	

MIRL Rwy 10-28 0