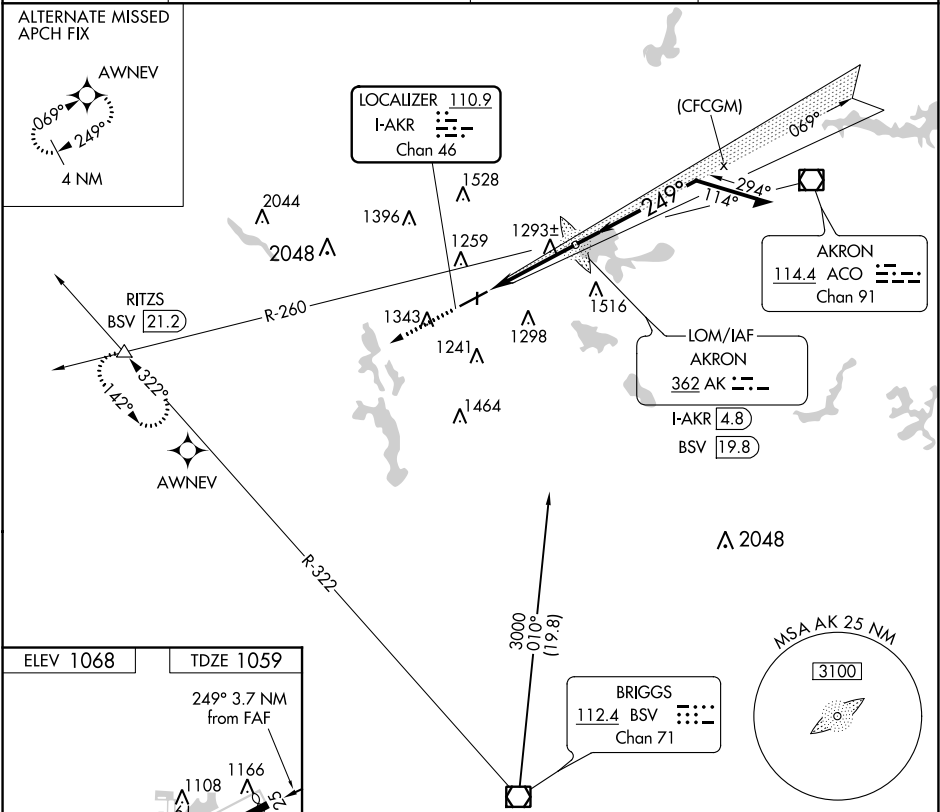


LOC/DME I-AKR <b>110.9</b> Chan <b>46</b>	APP CRS <b>249°</b>	Rwy Idg TDZE Apt Elev	<b>6077</b> <b>1059</b> <b>1068</b>
---	------------------------	-----------------------------	---

LOC RWY 25  
AKRON FULTON INTL (AKR)

ADF or DME or RADAR required for procedure entry.	MISSED APPROACH: Climb to 3100 on heading 249° and BSV VOR/DME R-322 to RITZS INT/BSV 21.2 DME and hold.
Rwy 25 helicopter visibility reduction below 1 SM NA.	

ASOS <b>126.825</b>	CLEVELAND APP CON ★ <b>118.6 371.875</b>	CLNC DEL <b>121.6</b>	UNICOM <b>123.075</b> (CTAF) <b>0</b>
------------------------	---	--------------------------	--



ELEV 1068	TDZE 1059
249° 3.7 NM from FAF	
1093	1166
1108	1231
1224	1196
1262	
REIL Rwy 7 and 25	
MIRL Rwy 1-19	
HIRL Rwy 7-25	
FAF to MAP 3.7 NM	
Knots	60 90 120 150 180
Min:Sec	3:42 2:28 1:51 1:29 1:14

3100	BSV R-322	RITZS	AK LOM I-AKR 4.8	Remain within 10 NM
hdg 249°				
Visual Segment - Obstacles.				
I-AKR 1.2				
2300				
3.7 NM				
CATEGORY	A	B	C	D
S-LOC 25	1560-1	501 (500-1)	1560-1 <sup>3</sup> / <sub>8</sub>	501 (500-1 <sup>3</sup> / <sub>8</sub> )
CIRCLING	1600-1 532 (600-1)	1680-1 612 (700-1)	1800-2 732 (800-2)	1840-2 <sup>1</sup> / <sub>2</sub> 772 (800-2 <sup>1</sup> / <sub>2</sub> )

EC-2, 31 DEC 2020 to 28 JAN 2021

EC-2, 31 DEC 2020 to 28 JAN 2021