

LOC/DME I-LUK 110.9 Chan 46	APP CRS 025°	Rwy Idg 6101 TDZE 481 Apt Elev 483
---	------------------------	---

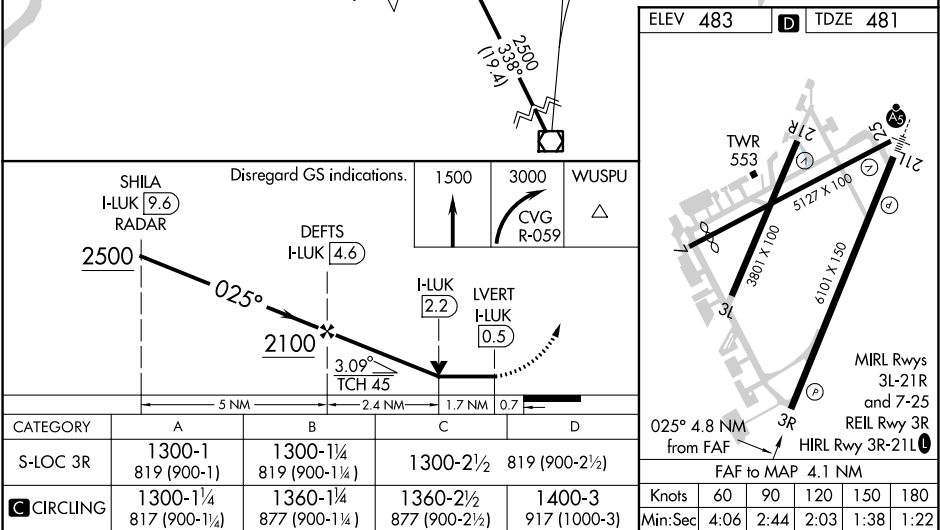
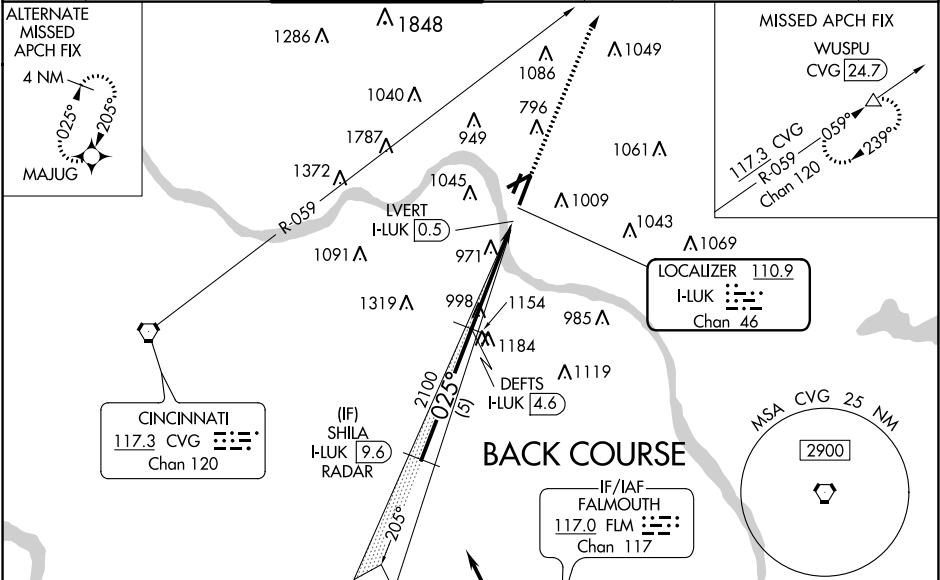
LOC BC RWY 3R
CINCINNATI MUNI AIRPORT LUNKEN FIELD (LUK)

DME or RADAR required for procedure entry.
DME required.

MISSED APPROACH: Climb to 1500 then climbing right turn to 3000 on CVG VORTAC R-059 to WUSPU/CVG 24.7 DME and hold.

⚠ Circling NA for Cat D northwest of Rwy 7-21R. Circling Rwy 3L, 7, 21R NA at night. VDP NA with Cincinnati/Northern Kentucky Intl altimeter setting. Rwy 3R helicopter visibility reduction below 3/4 SM NA. When local altimeter setting not received, use Cincinnati/Northern Kentucky Intl altimeter setting increase all MDA 100 feet; increase Circling Cat B visibility 1/4 mile, increase Circling Cat C visibility 1/2 mile.

ATIS 120.25	CINCINNATI APP CON 121.0 254.25	LUNKEN TOWER ★ 118.7 (CTAF) 0 257.8	GND CON 121.9	CLNC DEL 121.9	CLNC DEL 124.9 (when twr closed)	UNICOM 122.95
-----------------------	---	---	-------------------------	--------------------------	---	-------------------------



EC-2, 31 DEC 2020 to 28 JAN 2021

EC-2, 31 DEC 2020 to 28 JAN 2021