

WAAS CH 86701 W25A	APP CRS 246°	Rwy Idg TDZE 478 Apt Elev 483
--	------------------------	---

RNAV (GPS) RWY 25

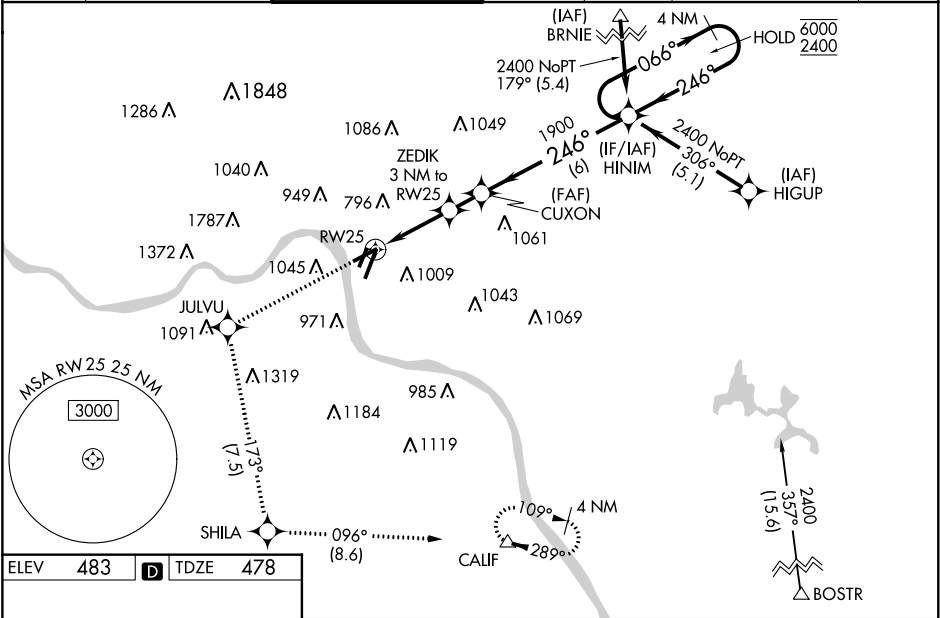
CINCINNATI MUNI AIRPORT LUNKEN FIELD (LUK)

RNP APCH.

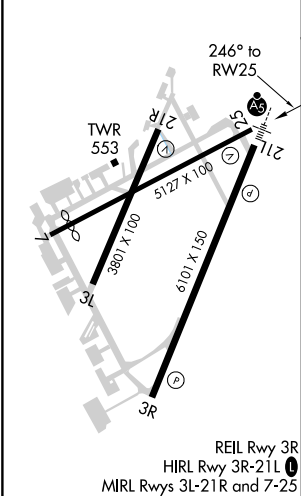
▼ Circling NA for Cat D north of Rwy 7 and northwest of Rwy 21R. Circling Rwy 3L, 7, 21R NA at night.
▲ Baro-VNAV and VDP NA when using Cincinnati/Northern Kentucky Intl altimeter setting. Rwy 25 helicopter visibility reduction below ¾ SM NA. For uncompensated Baro-VNAV systems, LNAV/VNAV NA below -15°C or above 54°C. When local altimeter setting not received, use Cincinnati/Northern Kentucky Intl altimeter setting and increase LPV DA to 961 feet, all visibilities ½ SM; increase LNAV/VNAV DA to 1248 feet; increase all MDAs 100 feet, LNAV Cat B visibility ¼ SM, and LNAV Cat C/D visibility ½ SM; increase Circling Cat B/D visibility ¼ SM and Circling Cat C visibility ½ SM.

MISSED APPROACH:
Climb to 2500 direct JULVU and on track 173° to SHILA and on track 096° to CALIF and hold, continue climb-in-hold to 2600.

ATIS 120.25	CINCINNATI APP CON 121.0 254.25	LUNKEN TOWER ★ 118.7 (CTAF) 0 257.8	GND CON 121.9	CLNC DEL 121.9	CLNC DEL 124.9 (when twr closed)	UNICOM 122.95
-----------------------	---	--	-------------------------	--------------------------	---	-------------------------



ELEV 483	D	TDZE 478
-----------------	----------	-----------------



2500	JULVU	SHILA	CALIF	4 NM Holding Pattern
↑	tr 173°	tr 096°	△	
* LNAV only.				
	ZEDIK 3 NM to RW25	CUXON 1900	HINIM	066° → 6000 ← 246° 2400 GP 3.00° TCH 55
	* 2.2 NM to RW25	* 1480	1900	VGSI and RNAV glidepath not coincident (VGSI Angle 3.00/TCH 40).
2.2 NM 0.8 1.3 NM 6 NM				
CATEGORY	A	B	C	D
LPV DA	875-1¼ 397 (400-1¼)			
LNAV/VNAV DA	1162-2½ 684 (700-2½)			
LNAV MDA	1160-1	682 (700-1)	1160-2	682 (700-2)
CIRCLING	1300-1¼ 817 (900-1¼)	1360-1¼ 877 (900-1¼)	1360-2½ 877 (900-2½)	1360-2¾ 877 (900-2¾)