

CLEVELAND, OHIO


AL-84 (FAA)

20366

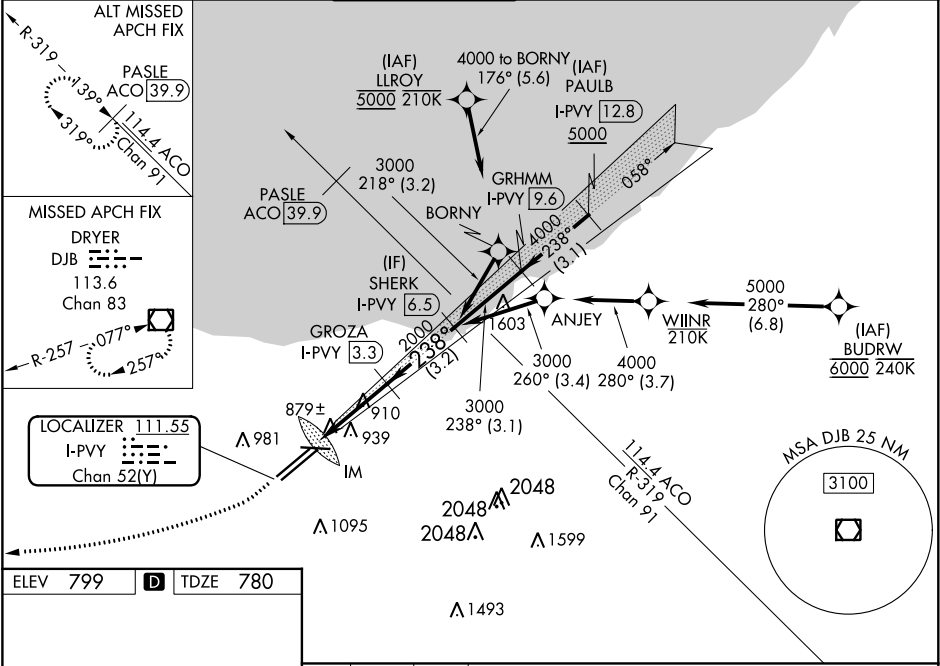
LOC/DME I-PVY 111.55 Chan 52 (Y)	APP CRS 238°	Rwy Idg TDZE 780 Apt Elev 799
--	------------------------	---

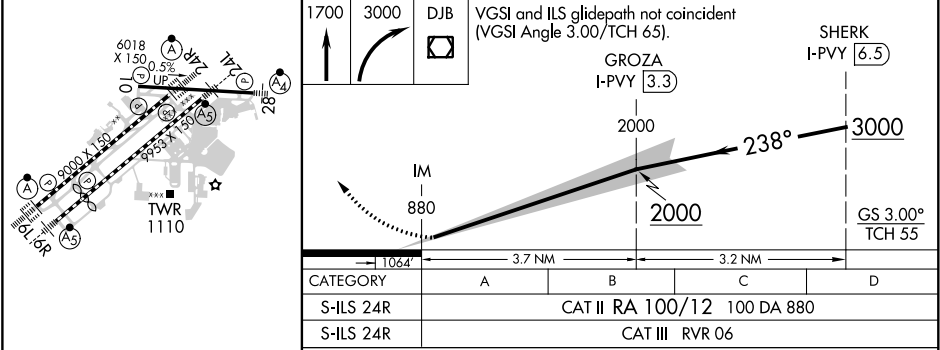
ILS RWY 24R (CAT II & III)

CLEVELAND-HOPKINS INTL (CLE)

DME required. Aircraft not DME/DME/IRU or GPS equipped - RADAR required for procedure entry. RNAV 1. From LLROY and BUDRW: RNAV 1-DME/DME/IRU or GPS required for procedure entry.	ALSIF-2 	MISSED APPROACH: Climb to 1700 then climbing right turn to 3000 direct DJB VOR/DME and hold.
▼ CAT II: RVR 1000 authorized with specific OPSPEC, MSPEC, or LOA approval and use of autoland or HUD to touchdown. Simultaneous approach authorized. Simultaneous operations require use of vertical guidance; maintain last assigned altitude until established on glideslope.		

D-ATIS ARR 127.85 DEP 132.375	CLEVELAND APP CON 124.0 346.325	CLEVELAND TOWER 124.5 273.45	GND CON 121.7 273.45	CLNC DEL 125.05 273.45	CPDLC
---	---	--	--------------------------------	----------------------------------	-------



ELEV 799	D	TDZE 780
		
CATEGORY A B C D		
S-ILS 24R CAT II RA 100/12 100 DA 880		
S-ILS 24R CAT III RVR 06		

REIL Rwy 10
TDZ/CL Rwy 6L, 6R, 24L and 24R
HIRL Rwy 6L-24R, 6R-24L and 10-28

CATEGORY II & III ILS - SPECIAL AIRCREW & AIRCRAFT CERTIFICATION REQUIRED

CLEVELAND, OHIO
Amdt 7 20JUN19

41°25'N-81°51'W

CLEVELAND-HOPKINS INTL (CLE)
ILS RWY 24R (CAT II & III)

EC-2, 31 DEC 2020 to 28 JAN 2021

EC-2, 31 DEC 2020 to 28 JAN 2021