

**ILS RWY 6L (CAT II & III)**  
CLEVELAND-HOPKINS INTL (CLE)



**T** Simultaneous approach authorized.  
Simultaneous operations require use of vertical guidance;  
maintain last assigned altitude until established on glideslope.

**MISSED APPROACH:** Climb to 1800 then climbing left turn to 3000 on heading 350° and DJB VOR/DME R-054 to PASLE/DJB 20 DME and hold.

ALTERNATE MISSED APCH FIX

PASLE ACO 39.9

113.6 DJB Chan 83

MISSED APCH FIX

PASLE DJB 20

LOCALIZER 111.55

I-LIZ Chan 52 (Y)

DRYER 113.6 DJB Chan 83

MSA DJB 25 NM

3100

(IAF) HICKR 5000 210K

2300 058° (1.9)

2000 058° (1.1)

BOEER I-LIZ 5.5

DEVYL I-LIZ 6.6

(IF) BETLL I-LIZ 8.5

2900 037° (2.9)

FUZED 3800 355° (6.7)

(IAF) GROHL 6000 210K

DAYZD I-LIZ 12

(IAF) KWENE I-LIZ 18.1

6000 210K

2300 058° (3.5)

2900 058° (3.1)

CRTEZ

4000 140° (4.7)

2900 085° (3.1)

981 IM

1603

2048

2048

1599

1493

1561

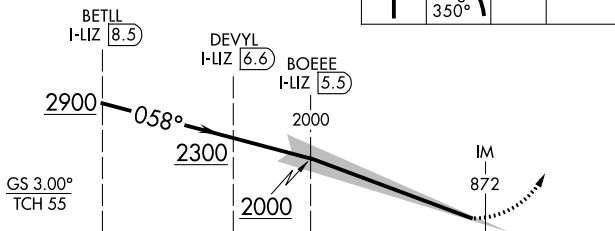
1095

ELEV 799

TDZE 773

D

1800 ↑	3000 ← hdg 350°	DJB R-054
-----------	--------------------------	--------------



	1.9 NM	1.1 NM	3.7 NM	1.036"
CATEGORY	A	B	C	D
S-ILS 6L	CAT II RA 111/12 100 DA 873			
S-ILS 6L	CAT III RVR 06			

CATEGORY II & III ILS - SPECIAL AIRCREW  
& AIRCRAFT CERTIFICATION REQUIRED

REIL Rwy 10  
TDZ/CL Rwy 6L, 6R, 24L, and 24R  
HIRL Rwy 6L-24R, 6R-24L and 10-28