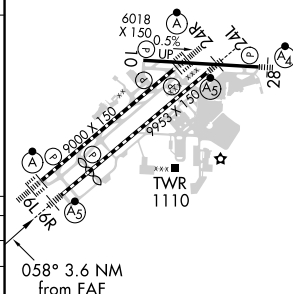


ILS or LOC RWY 6R  
CLEVELAND-HOPKINS INTL (CLE)

**MISSED APPROACH:**  
Climb to 1600 then  
climbing right turn  
to 3100 on CXR  
VOR/DME R-265 to  
NEIL/CXR 21.5 DME  
and hold.

**T** Circling Rwy 10 NA at night. Simultaneous approach authorized. Simultaneous operations require use of vertical guidance; maintain last assigned altitude until established on glideslope. Inop table does not apply to Sidestep 6L. For inop ALS, increase S-LOC 6R Cats C/D visibility to 1½ SM.

ALTERNATE MISSED  
APCH FIX



REIL Rwy 10  
TDZ/CL Rwy 6L, 6R, 24L and 24R  
HRL Rwy 6L-24R, 6R-24L and 10-28