

APP CRS 238°	Rwy Idg TDZE Apt Elev	9956 786 799
------------------------	-----------------------------	---

RNAV (RNP) Z RWY 24L

CLEVELAND-HOPKINS INTL (CLE)

RNP AR APCH.

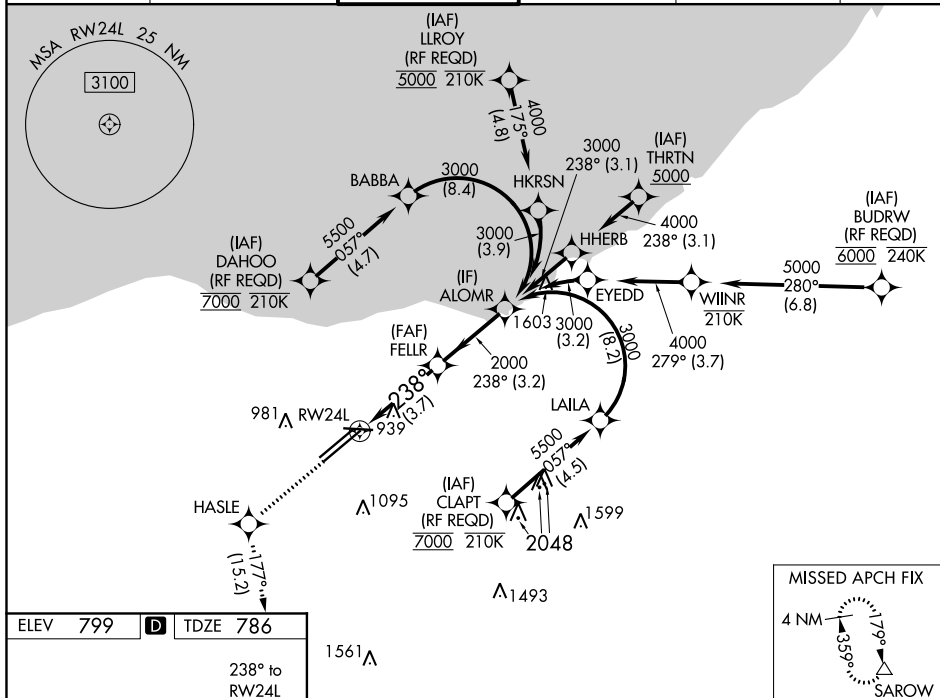
T For uncompensated Baro-VNAV systems, procedure NA below -18°C (0°F) or above 54°C (130°F). For inop ALS, increase RNP 0.19 all Cats visibility to RVR 5500.

MALSR



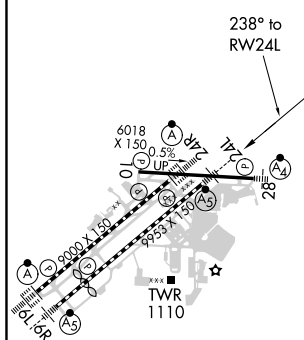
MISSED APPROACH: Climb to 3000 direct HASLE and on track 177° to SAROW and hold.




D-ATIS	CLEVELAND APP CON	CLEVELAND TOWER	GND CON	CLNC DEL	CPDLC
ARR 127.85	124.0 346.325	124.5 273.45	121.7 273.45	125.05 273.45	
DEP 132.375					



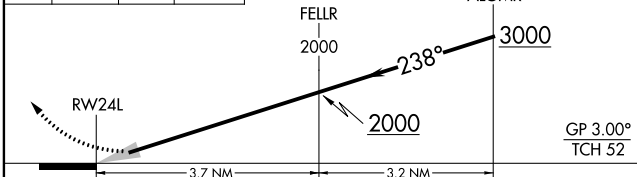
ELEV 799	D	TDZE 786
----------	----------	----------

238° to
RW24L

1561_A

3000	HASLE	tr 177°	SAROW
			

VGSI and RNAV glidepath not coincident (VGSI Angle 3.00/TCH 48).



CATEGORY	A	B	C	D
RNP 0.19 DA	1140/30 354 (400-%)			
RNP 0.30 DA	1243/45 457 (500-%)			

AUTHORIZATION REQUIRED

CLEVELAND, OHIO
Orig 24MAY18

41°25'N-81°51'W

CLEVELAND-HOPKINS INTL (CLE)
RNAV (RNP) Z RWY 24L