

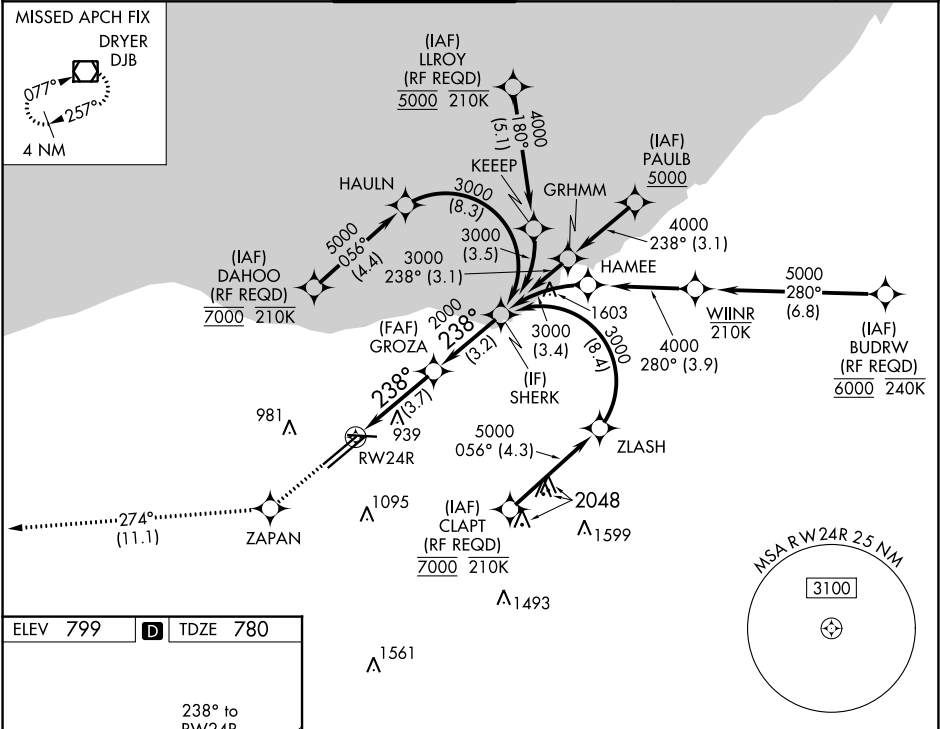
APP CRS	Rwy Idg	9000
238°	TDZE	780
	Apt Elev	799

RNAV (RNP) Z RWY 24R

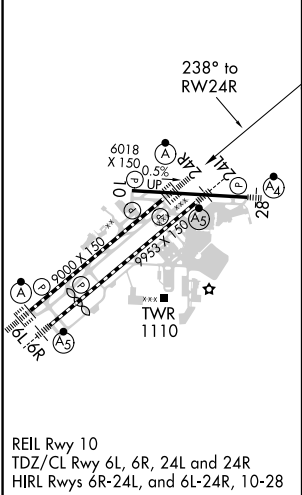
CLEVELAND-HOPKINS INTL (CLE)

RNP AR APCH.	ALSF-2	MISSED APPROACH: Climb to 3000 direct ZAPAN and on track 274° to DJB VOR/DME and hold.
▼ For uncompensated Baro-VNAV systems, procedure NA below -18°C (0°F) or above 54°C (130°F). For inop ALS, increase RNP 0.13 all Cats visibility to RVR 4500.		

D-ATIS ARR 127.85 DEP 132.375	CLEVELAND APP CON 124.0 346.325	CLEVELAND TOWER 124.5 273.45	GND CON 121.7 273.45	CLNC DEL 125.05 273.45	CPDLC
-------------------------------------	------------------------------------	---------------------------------	-------------------------	---------------------------	-------



ELEV 799	D	TDZE 780
----------	---	----------



3000	ZAPAN	tr 274°	DJB	VGSI and RNAV glidepath not coincident (VGSI Angle 3.00/TCH 65).
SHERK				
GROZA				
2000				
238°				
3000				
GP 3.00° TCH 55				
3.7 NM				
3.2 NM				
CATEGORY	A	B	C	D
RNP 0.13 DA	1064/24 284 (300-1/2)			
RNP 0.30 DA	1176/35 396 (400-5/8)			
AUTHORIZATION REQUIRED				

EC-2, 31 DEC 2020 to 28 JAN 2021

EC-2, 31 DEC 2020 to 28 JAN 2021