

APP CRS	Rwy Idg	9000
058°	TDZE	773
	Apt Elev	799

RNAV (RNP) Z RWY 6L
CLEVELAND-HOPKINS INTL (CLE)

RNP AR APCH.

T For uncompensated Baro-VNAV systems, procedure NA below -18°C (0°F) or above 54°C (130°F). For inop ALS, increase RNP 0.17 all Cats visibility to RVR 5500 and RNP 0.30 all Cats visibility to RVR 6000.

ALSF-2



MISSED APPROACH: Climb to 3000 direct ACAPO and on track 001° to PASLE and hold.

D-ATIS
ARR **127.85**
DEP **132.375**

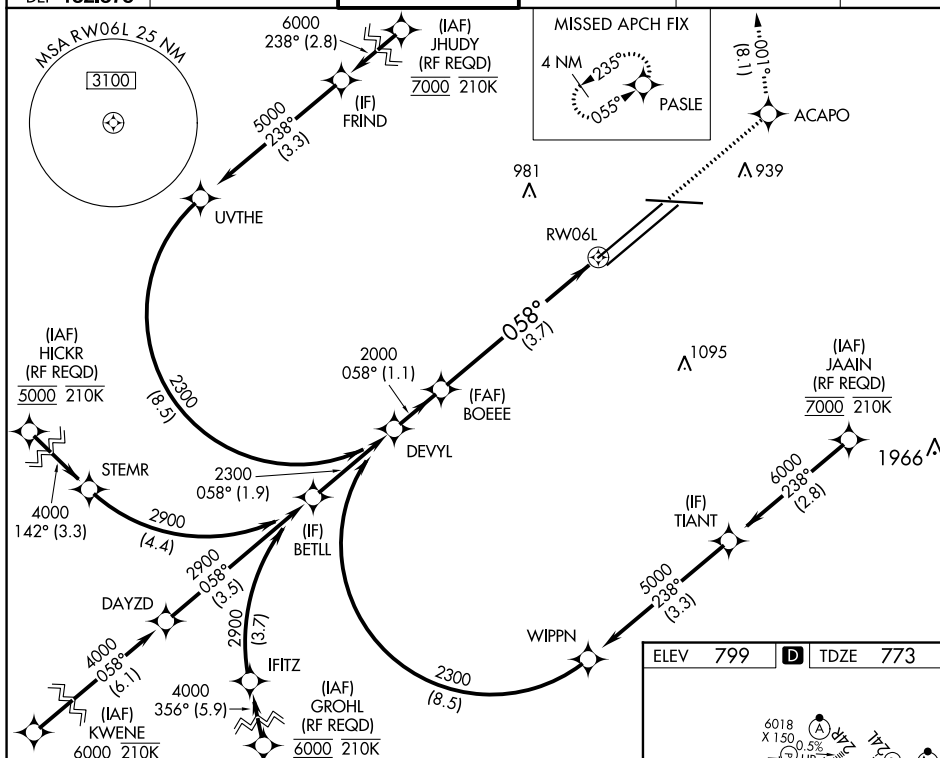
CLEVELAND APP CON
124.0 346.325

CLEVELAND TOWER
124.5 273.45

GND CON
121.7 273.45

CLNC DEL
125.05 273.45

CPDLC



VGSI and RNAV glidepath not coincident
(VGSI Angle 3.00/TCH 69).

not coincident 00/TCH 69).	3000	ACAPO	tr	PASLE
-------------------------------	------	-------	----	-------

See planview for multiple IF locations.

GP 3.00°
TCH 55

2300

RW06

058° to

REIL Rwy 10
TDZ/CL Rwy 6L, 6R, 24L, and 24R
HIRL Rwy 6L-24R, 6R-24L and 10-28

CLEVELAND, OHIO
Orig 24MAY18

41°25'N-81°51'W

CLEVELAND-HOPKINS INTL (CLE)
RNAV (RNP) Z RWY 6L

EC-2, 31 DEC 2020 to 28 JAN 2021