

LOC/DME I-CMH 111.75 Chan 54 (Y)	APP CRS 281°	Rwy Idg TDZE 815 Apt Elev 815
--	------------------------	---

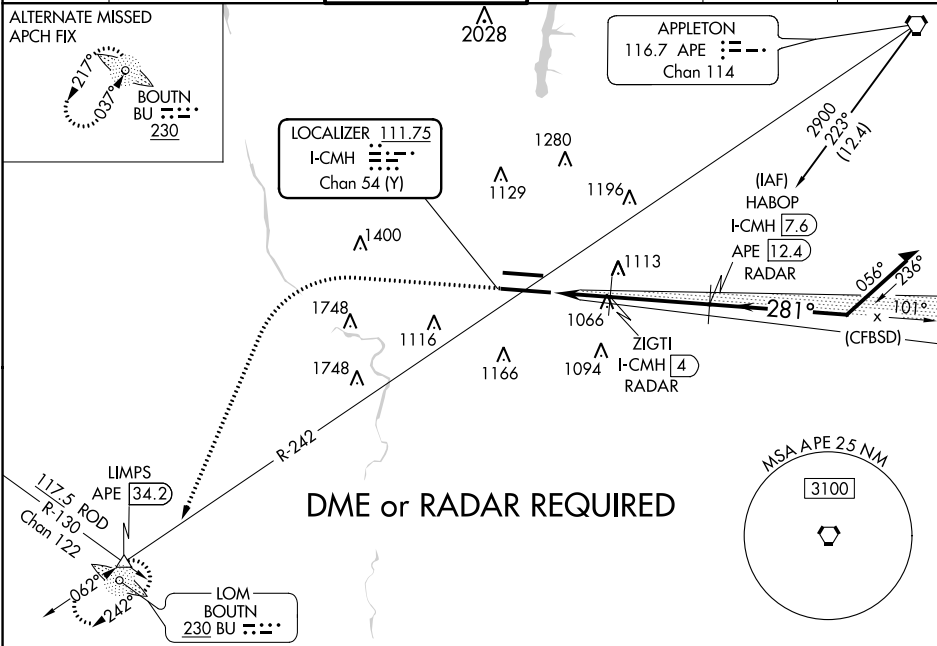
ILS or LOC RWY 28L
JOHN GLENN COLUMBUS INTL (CMH)

⚠ Simultaneous approach authorized. For inoperative ALS, increase S-LOC 28L Cats C and D visibility to 2 SM and increase ZIGTI fix minimums S-LOC 28L Cats C and D visibility to 1 3/4 SM.

MALSR

MISSED APPROACH: Climb to 1400 then climbing left turn to 3000 on heading 210° and on APE VORTAC R-242 to LIMPS INT/ APE 34.2 DME and hold.

D-ATIS 124.6	COLUMBUS APP CON 125.95 371.975	COLUMBUS TOWER 132.7 257.8	GND CON 121.9 348.6	CLNC DEL 126.3	CPDLC
------------------------	---	--------------------------------------	-------------------------------	--------------------------	-------



ELEV 815	D	TDZE 815	1400	3000	APE R-242	LIMPS	HABOP I-CMH 7.6 RADAR	Remain within 10 NM
			↑	hdg 210°				
			*LOC only.			ZIGTI I-CMH 4 RADAR	2700	101°
						I-CMH 1.8	I-CMH 3.2	281°
						*1560		
						VGSI and ILS glidepath not coincident (VGSI Angle 3.00/TCH 68).		
						1.4 NM 0.8 3.6 NM		
						281° 5.8 NM from FAF		
						2700		
						GS 3.00° TCH 52		
						CATEGORY A B C D		
						S-ILS 28L 1015/18 200 (200-1/2)		
						S-LOC 28L 1560/24 745 (800-1/2) 1560/40 745 (800-3/4) 1560-1 3/4 745 (800-1 3/4)		
						CIRCLING 1560-1 745 (800-1) 1560-1 1/4 745 (800-1 1/4) 1560-2 1/4 745 (800-2 1/4) 1560-2 1/2 745 (800-2 1/2)		
						ZIGTI FIX MINIMUMS (DME OR RADAR REQUIRED)		
						S-LOC 28L 1320/24 505 (600-1/2) 1320/55 505 (600-1)		
						CIRCLING 1340-1 525 (600-1) 1520-2 705 (800-2) 1540-2 1/4 725 (800-2 1/4)		