

APP CRS 281°	Rwy Idg	10113
	TDZE	815
	Apt Elev	815

RNAV (RNP) Z RWY 28L

JOHN GLENN COLUMBUS INTL (CMH)

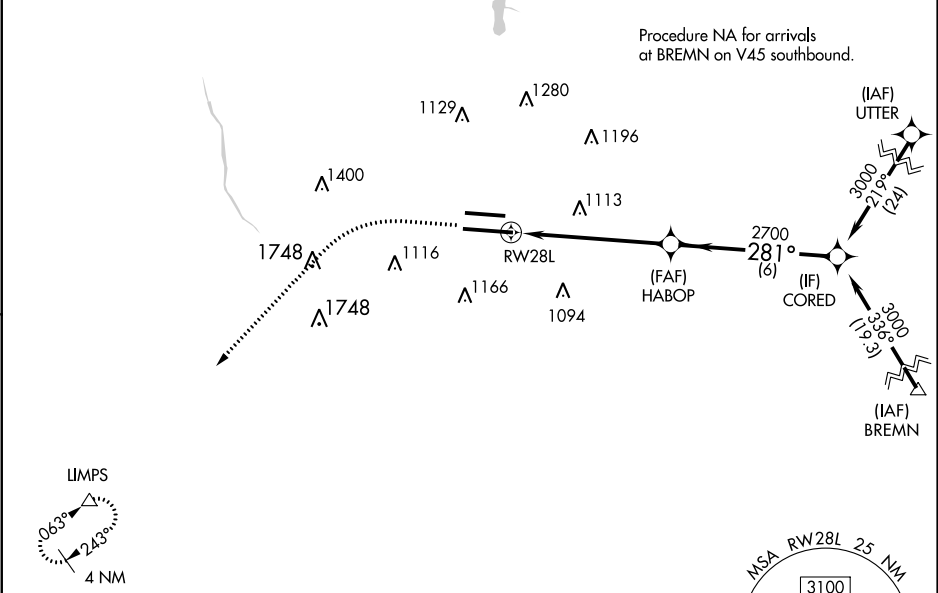
For uncompensated Baro-VNAV systems, procedure NA below -18°C (0°F) or above 54°C (130°F). GPS required. For inoperative ALS, increase RNP 0.17 all Cats visibility to RVR 4600, increase RNP 0.30 all Cats visibility to 1½ SM. Simultaneous approach authorized. Use of FD or AP providing RNAV track guidance required during simultaneous operations.

MALSR

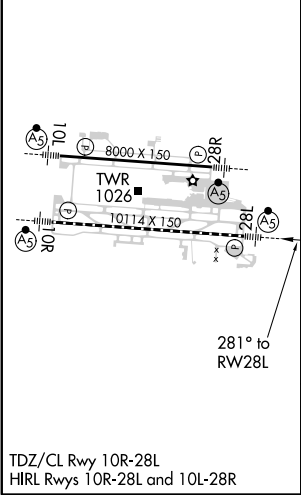
MISSED APPROACH:

Climb to 1400 then climbing left turn to 3000 direct LIMPS and hold.

D-ATIS 124.6	COLUMBUS APP CON 125.95 371.975	COLUMBUS TOWER 132.7 257.8	GND CON 121.9 348.6	CLNC DEL 126.3	CPDLC
------------------------	---	--------------------------------------	-------------------------------	--------------------------	-------



ELEV 815	D	TDZE 815
----------	----------	----------



1400	3000	LIMPS	VGSI and RNAV glidepath not coincident (VGSI Angle 3.00°/ TCH 68).	CORED
<div></div>	<div></div>	<div></div>	HABOP 2700	3000
RW28L		2700	281°	GP 3.00° TCH 52
5.8 NM		6 NM		
CATEGORY	A	B	C	D
RNP 0.17 DA	1105/40 290 (300-¾)			
RNP 0.30 DA	1295/60 480 (500-1¼)			