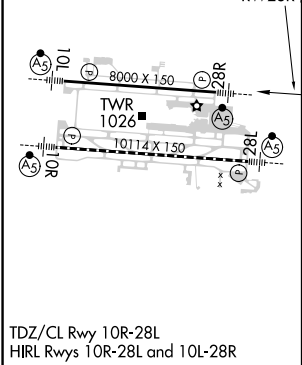
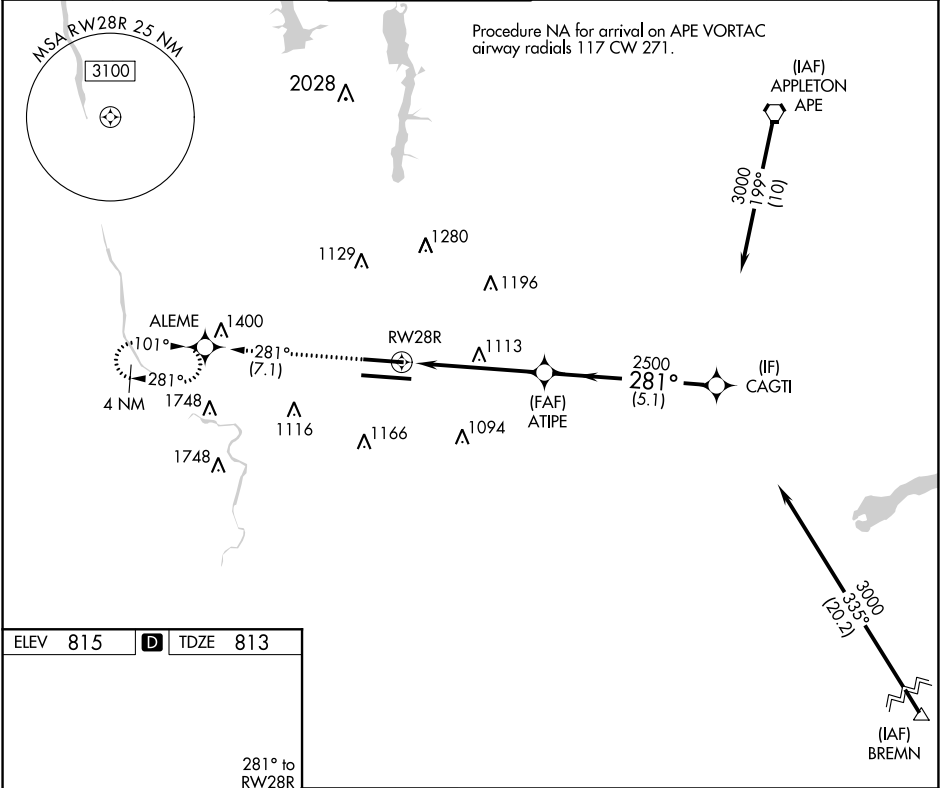


APP CRS 281°	Rwy Idg	8000
	TDZE	813
	Apt Elev	815

RNAV (RNP) Z RWY 28R
JOHN GLENN COLUMBUS INTL (CMH)

▼ For uncompensated Baro-VNAV systems, procedure NA below -18°C (0°F) or above 54°C (130°F). GPS required. Use of FD or AP providing RNAV track guidance required during simultaneous operations. For inoperative ALS, increase RNP 0.16 all Cats visibility to RVR 6000 and RNP 0.30 all Cats visibility to 1% SM. Simultaneous approach authorized.				MALSR 	MISSED APPROACH: Climb to 2800 on track 281° to ALEME and hold.
D-ATIS 124.6	COLUMBUS APP CON 125.95 371.975	COLUMBUS TOWER 132.7 257.8	GND CON 121.9 348.6	CLNC DEL 126.3	CPDLC



2800 ↑ tr 281°		ALEME			
RW28R		ATIPE 2500		CAGTI 3000	
5.1 NM		5.1 NM		GP 3.00° TCH 50	
CATEGORY		A		B	
RNP 0.16 DA		1167/50		354 (400-1)	
RNP 0.30 DA		1224/50		411 (500-1)	
AUTHORIZATION REQUIRED					