


WAAS CH 99603 W10A	APP CRS 101°	Rwy Idg TDZE 809 Apt Elev 815	10113
--	------------------------	---	--------------

RNAV (GPS) Y RWY 10R
JOHN GLENN COLUMBUS INTL (CMH)

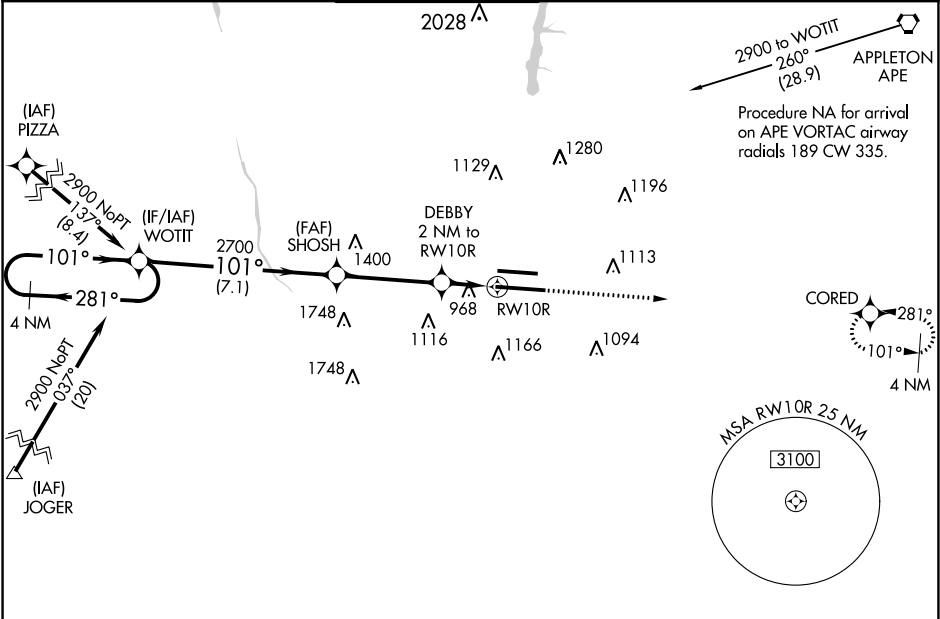
V For uncompensated Baro-VNAV systems, LNAV/VNAV NA below -18°C (0°F) or above 54°C (130°F). DME/DME RNP-0.3 NA. LNAV procedure NA during simultaneous operations. Use of FD or AP providing RNAV track guidance required during simultaneous operations. Simultaneous approach authorized.

MALSR



MISSED APPROACH:
Climb to 3000 direct
CORED and hold.

D-ATIS 124.6	COLUMBUS APP CON 125.95 371.975	COLUMBUS TOWER 132.7 257.8	GND CON 121.9 348.6	CLNC DEL 126.3	CPDLC
------------------------	---	--------------------------------------	-------------------------------	--------------------------	-------



ELEV 815 D TDZE 809	
<p>4 NM Holding Pattern</p> <p>VGSI and RNAV glidepath not coincident (VGSI Angle 3.00/TCH 70).</p> <p>WOTIT SHOSH DEBBY 2 NM to RW10R</p> <p>2900 281° 101° 101° 2700 1480</p> <p>GP 3.00° TCH 54</p> <p>*1.1 NM to RW10R</p> <p>*LNAV only.</p> <p>CORED</p> <p>101° to RW10R</p>	
CATEGORY	A B C D
LPV DA	1009/18 200 (200-½)
LNAV/VNAV DA	1273/55 464 (500-1)
LNAV MDA	1220/24 411 (500-½) 1220/40 411 (500-¾)
C CIRCLING	1340-1 525 (600-1) 1520-2 705 (800-2) 1540-2¼ 725 (800-2¼)
TDZ/CL Rwy 10R-28L HIRL Rwy 10R-28L and 10L-28R	

EC-2, 31 DEC 2020 to 28 JAN 2021

EC-2, 31 DEC 2020 to 28 JAN 2021