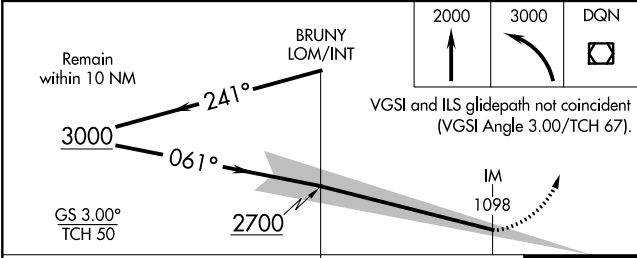
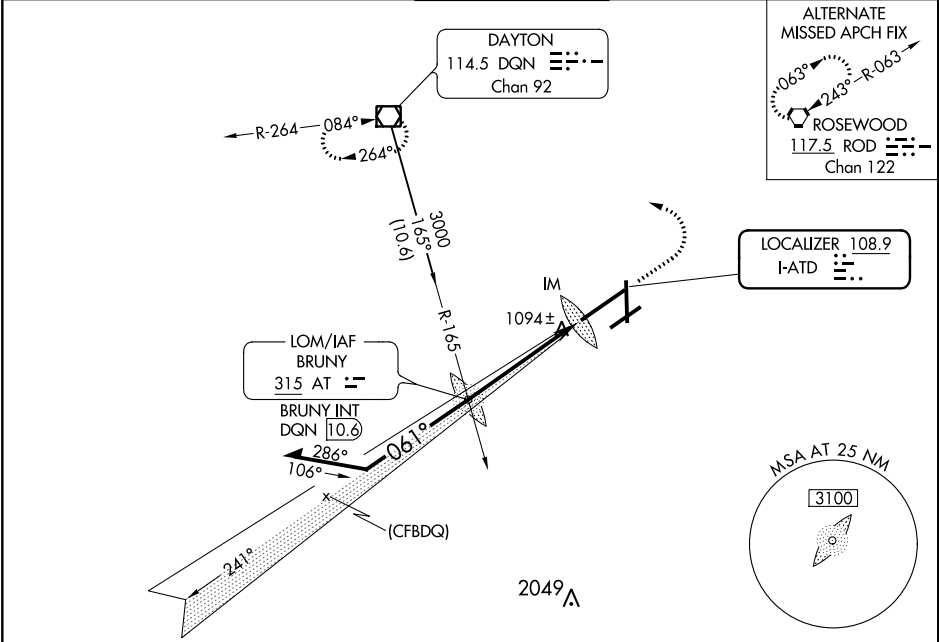


LOC I-ATD 108.9	APP CRS 061°	Rwy Idg 10900 TDZE 998 Apt Elev 1009
---------------------------	------------------------	---

ILS RWY 6L (CAT II & III)
JAMES M COX DAYTON INTL (DAY)

Simultaneous approach authorized. CAT II: RVR 1000 authorized with specific OPSPEC, MSPEC, or LOA approval and use of autoland or HUD to touchdown.		ALSf-2	MISSED APPROACH: Climb to 2000 then climbing left turn to 3000 direct DQN VOR/DME and hold.	
ATIS 125.8	COLUMBUS APP CON 118.425 323.15	DAYTON TOWER 119.9 257.7	GND CON 121.9	CINC DEL 121.75



CATEGORY	A	B	C	D
S-ILS 6L	CAT II RA 99/12 100 DA 1098			
S-ILS 6L	CAT III RVR 06			

CATEGORY II & III ILS - SPECIAL AIRCREW & AIRCRAFT CERTIFICATION REQUIRED

ELEV 1009 TDZE 998

HIRL all Rwys
TDZ/CL Rwy 6L
REIL Rwy 6R and 36

EC-2, 31 DEC 2020 to 28 JAN 2021

EC-2, 31 DEC 2020 to 28 JAN 2021