

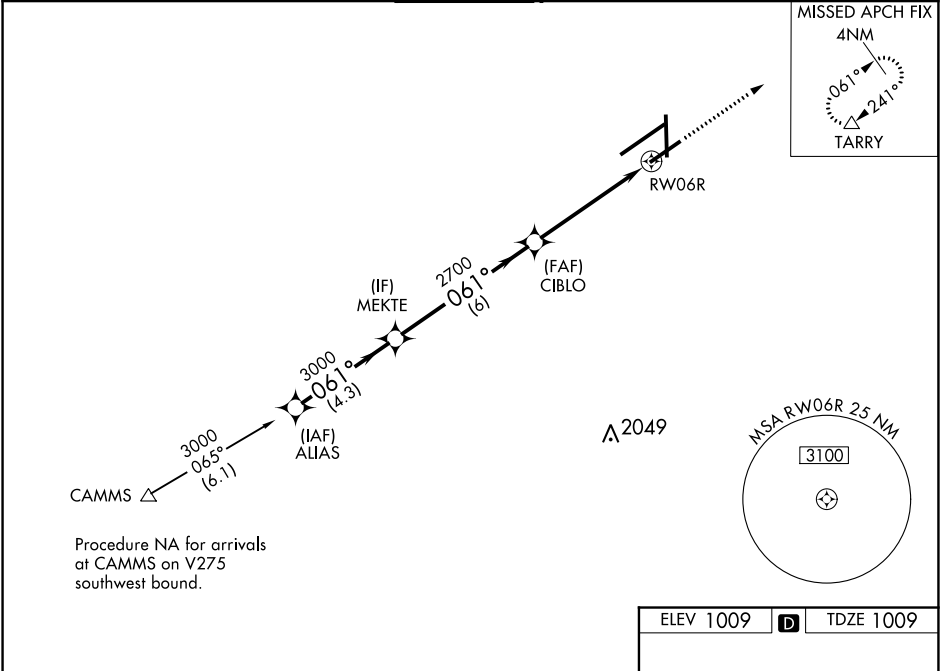
WAAS CH <b>90414</b> <b>W06B</b>	APP CRS <b>061°</b>	Rwy Idg TDZE Apt Elev	<b>7001</b> <b>1009</b> <b>1009</b>
--	------------------------	-----------------------------	---

**RNAV (GPS) RWY 6R**  
JAMES M COX DAYTON INTL (DAY)

**⚠** For uncompensated Baro-VNAV systems, LNAV/VNAV NA below -19°C (-4°F) or above 54°C (130°F). Rwy 6R helicopter visibility reduction below ¾ SM NA. Simultaneous approach authorized. DME/DME RNP-0.3 NA. LNAV procedure NA during simultaneous operations. Use of FD or AP required during simultaneous operations.

MISSED APPROACH: Climb to 3000 direct TARRY and hold.

ATIS <b>125.8</b>	COLUMBUS APP CON <b>118.425 323.15</b>	DAYTON TOWER <b>119.9 257.7</b>	GND CON <b>121.9</b>	CLNC DEL <b>121.75</b>
----------------------	---	------------------------------------	-------------------------	---------------------------



VGSI and RNAV glidepath not coincident (VGSI Angle 3.00/TCH 50).				
GP 3.00° TCH 53	4.3 NM	6 NM	3.6 NM	1.5 NM
CATEGORY	A	B	C	D
LPV DA	1259-¾		250 (300-¾)	
LNAV/VNAV DA	1496-1¾		487 (500-1¾)	
LNAV MDA	1520-1	511 (600-1)	1520-1½ 511 (600-1½)	1520-1¾ 511 (600-1¾)
CIRCLING	1580-1	571 (600-1)	1580-1½ 571 (600-1½)	1640-2 631 (700-2)

