

DAYTON, OHIO

## ILS or LOC RWY 5L

LOC I-FAE <b><u>109.7</u></b>	APCH CRS <b>053°</b>	Rwy Ldg <b>12,600</b> TDZE <b>803</b> Arpt Elev <b>823</b>
----------------------------------	-------------------------	--

AL-108 [USAF]

WRIGHT-PATTERSON AFB (KFFO)

**T** \* When ALS inop, increase RVR to 40 and vis to  $\frac{3}{4}$  mile.  
 \*\* When ALS inop, increase CAT AB RVR to 55 and vis to 1 mile, CAT CDE vis to  $1\frac{3}{8}$  miles.

ALSF-1

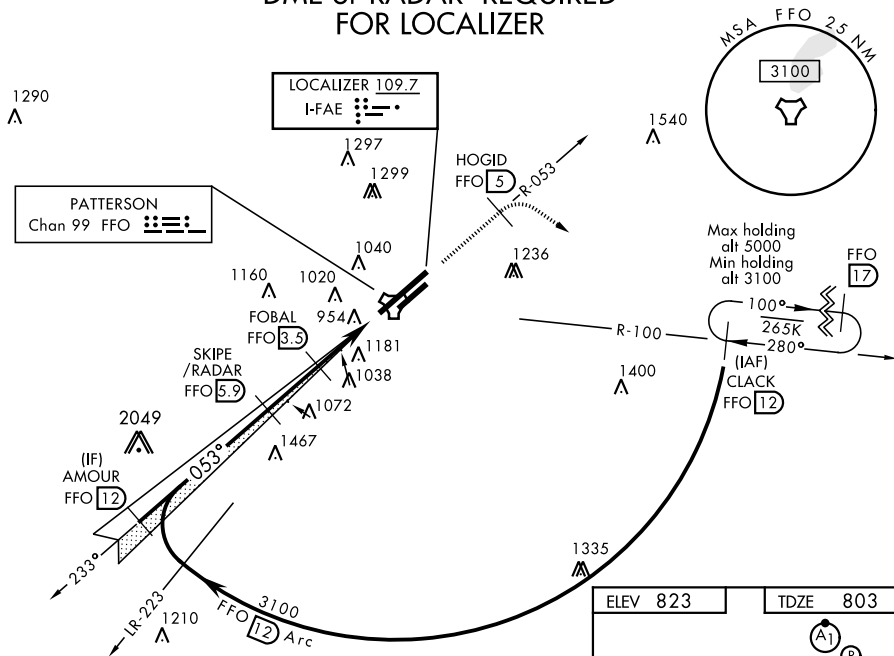
† MISSED APPROACH: Climb to 2000 via FFO R-053 at 5 DME, turn right direct CLACK climbing to 3100 and hold.

ATIS 124.475 269.9	COLUMBUS APP CON 118.85 269.275	PATTERSON TOWER 126.9 281.45	GND CON 121.8 335.8
-----------------------	------------------------------------	---------------------------------	------------------------

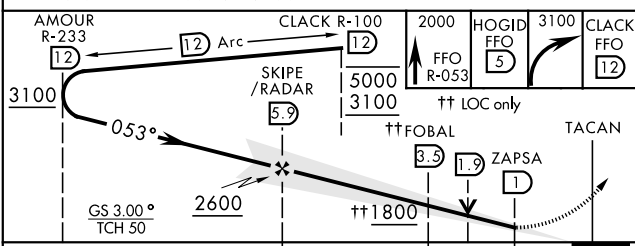
\*\*\* When Rwy 23R VGSi inop,  
circling to Rwy 23R NA at night.

† Missed approach requires use of RNAV or ATC radar monitoring.

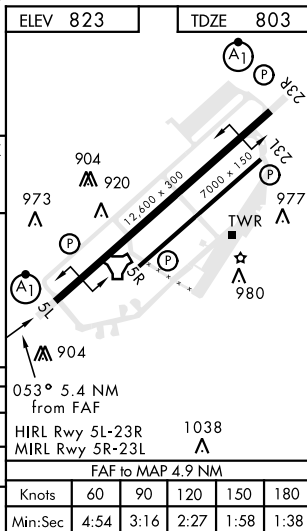
DME or RADAR REQUIRED  
FOR LOCALIZER



EMERG SAFE ALT 100 NM 3700



CATEGORY		A	B	C	D	E
S-ILS 5L *		1003/24		200	(200-½)	
S-LOC 5L **		1280/24	476 (500-½)	1280/50	476	(500-1)
<b>C</b> CIRCLING ***	1380-1	1440-1	1560-2	1620-2½	1620-2¾	
	557 (600-1)	617 (700-1)	737 (800-2)	797 (800-2½)	797 (800-2¾)	



DAYTON, OHIO

Amdt 4 05JAN17

39° 50' N-84° 03' W

WRIGHT-PATTERSON AFB (KFFO)

## ILS or LOC RWY 5L

DEC-2, 31 DEC 2020 to 28 JAN 2021

EC-2, 31 DEC 2020 to 28 JAN 2021