

APCH CRS	Rwy Idg	7000
233°	TDZE	818
	Arpt Elev	823

AL-108 (USAF)

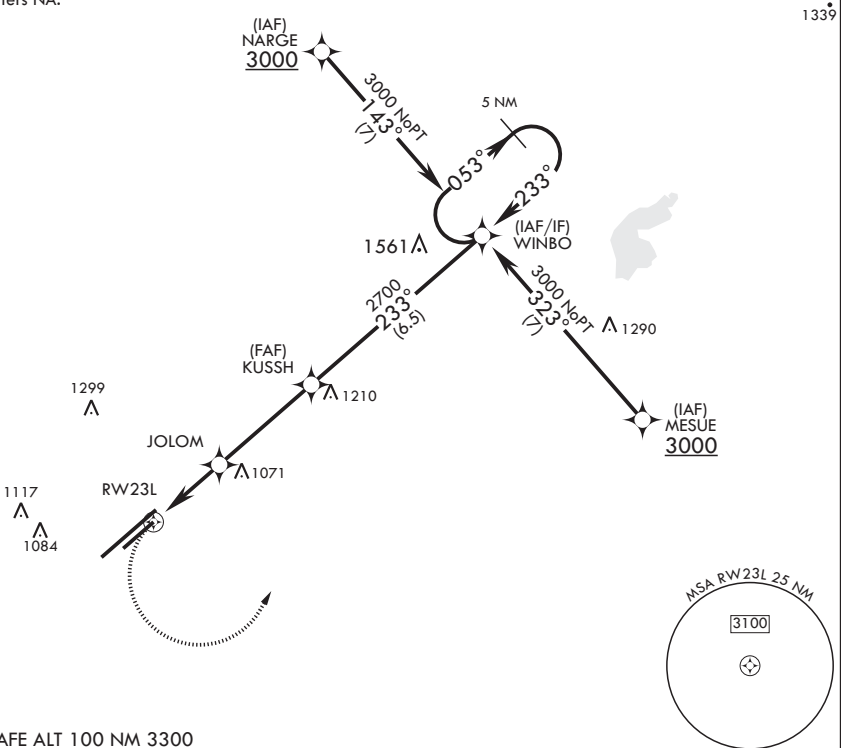
WRIGHT PATTERSON AFB (KFFO)

▼ * When Rwy 23R VGSi inop, circling to Rwy 23R NA at night.	MISSED APPROACH: Turn left climb to 3000 direct WINBO WPT and hold.
--	---

ATIS 124.475 269.9	COLUMBUS APP CON 118.85 269.275	PATTERSON TOWER 126.9 281.45	GND CON 121.8 335.8
-----------------------	------------------------------------	---------------------------------	------------------------

DME/DME RNP -0.3 NA

LNAV Visibility Reduction
by Helicopters NA.



EMERG SAFE ALT 100 NM 3300

 3000	 WINBO	VGSI and descent angle not coincident. † KUSSH to RW23L	 WINBO	053°	3000
<p>1.4 NM to RW23L</p> <p>JOLOM 1620</p> <p>KUSSH 2700</p> <p>2.5 NM</p> <p>3.5 NM</p> <p>† < 2.88° TCH 50</p>					
<p>MSA RW23L 25 NM</p> <p>12,600 x 300</p> <p>7000 x 150</p> <p>TWR 977</p> <p>980</p> <p>889</p> <p>1046</p>					
CATEGORY	A	B	C	D	
LNAV MDA	1320-1	502 (500-1)	1320-1 3/8	502 (500-1 3/8)	
CIRCLING*	1380-1 557 (600-1)	1440-1 617 (700-1)	1560-2 737 (800-2)	1620-2 1/2 797 (800-2 1/2)	HIRL Rwy 5L-23R MIRL Rwy 5R-23L