

DAYTON, OHIO

19171  
RNAV (GPS) RWY 23R

APCH CRS <b>233°</b>	Rwy Idg TDZE Arpt Elev	<b>12,600</b> <b>823</b> <b>823</b>
-------------------------	------------------------------	---

AL-108 (USAF)

WRIGHT PATTERSON AFB (KFFO)

**▼** \* When ALS inop, increase CAT AB RVR to 55, vis to 1 mile; CAT CD vis to 1 3/8 miles.  
 \*\* When Rwy 23R VGSi inop, circling to Rwy 23R NA at night.

ALSIF-1

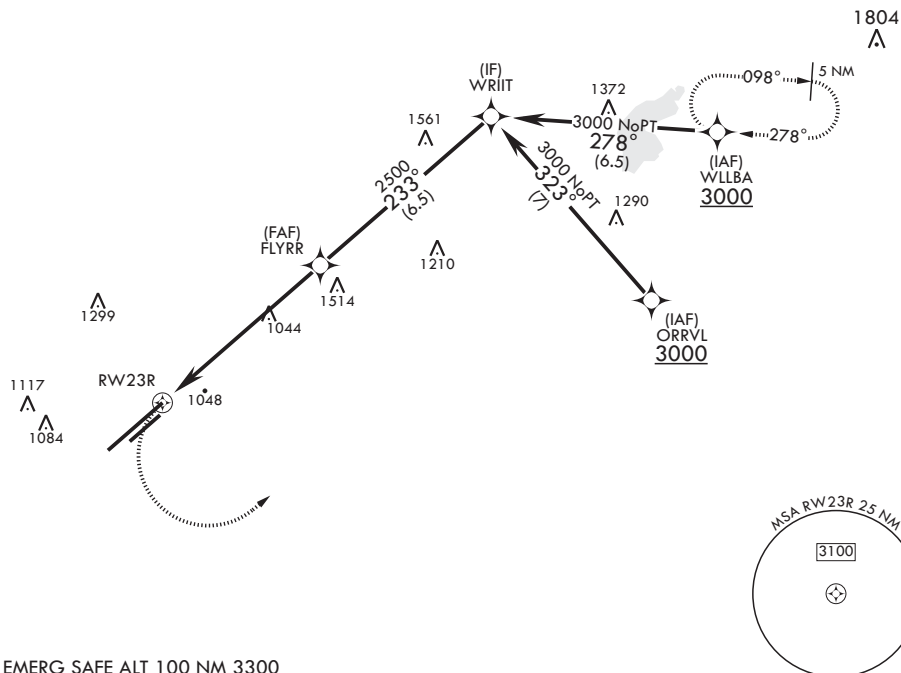


MISSED APPROACH: Turn left climb to 3000 direct WLLBA waypoint and hold.

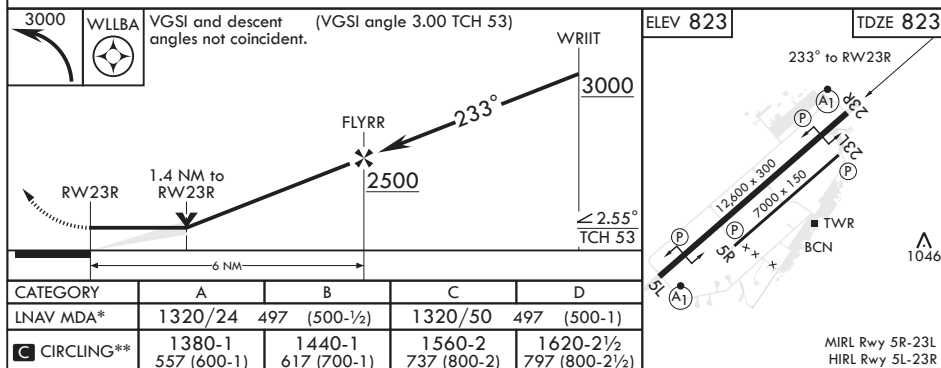
ATIS <b>124.475 269.9</b>	COLUMBUS APP CON/DEP CON <b>118.85 269.275</b>	PATTERSON TOWER <b>126.9 281.45</b>	GND CON <b>121.8 335.8</b>
------------------------------	---	--	-------------------------------

DME/DME RNP-0.3 NA

1323



EMERG SAFE ALT 100 NM 3300



DAYTON, OHIO

39°50'N - 84°03'W

WRIGHT PATTERSON AFB (KFFO)

Amdt 5 13OCT16

RNAV (GPS) RWY 23R

EC-2, 31 DEC 2020 to 28 JAN 2021