

RNAV (GPS) RWY 5L

APCH CRS	Rwy Idg	12,600
053°	TDZE	803
	Arpt Elev	823

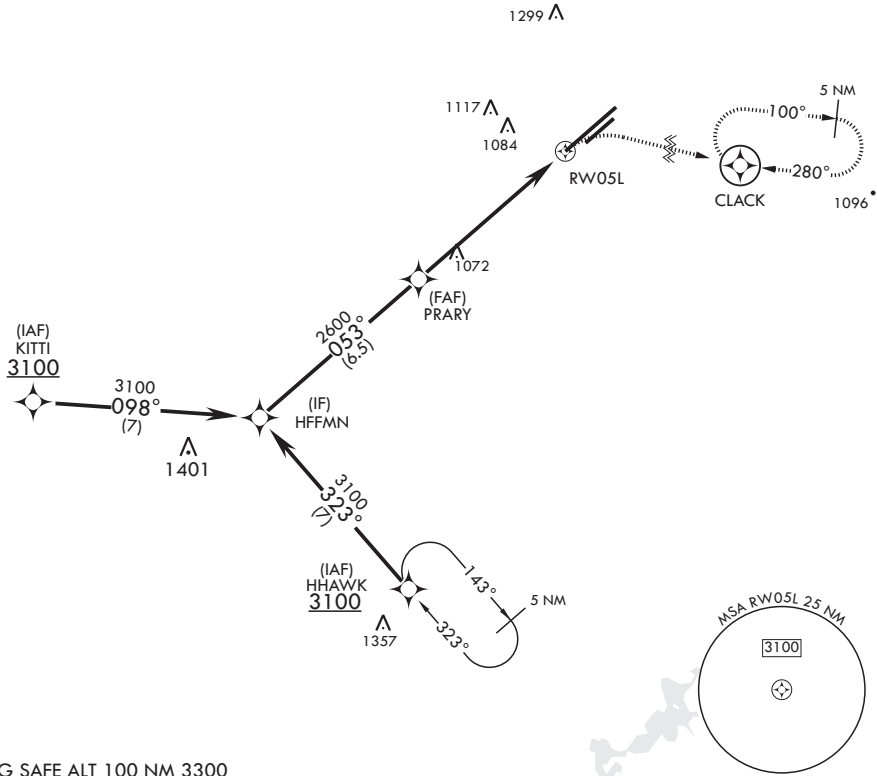
AL-108 (USAF)

WRIGHT PATTERSON AFB (KFFO)

<p>▼ * When ALS inop increase CAT AB RVR to 55, vis to 1 mile; CAT CD vis to 1 5/8 miles. ** When Rwy 23R VGSi inop, circling to Rwy 23R NA at night.</p>	<p>ALSF-1</p> 	<p>MISSED APPROACH: Turn right climb to 3100 direct CLACK WPT and hold.</p>
---	---	---

<p>ATIS</p> <p>124.475 269.9</p>	<p>COLUMBUS APP CON/DEP CON</p> <p>118.85 269.275</p>	<p>PATTERSON TOWER</p> <p>126.9 281.45</p>	<p>GND CON</p> <p>121.8 335.8</p>
----------------------------------	---	--	-----------------------------------

DME/DME RNP-0.3 NA



EMERG SAFE ALT 100 NM 3300

HFFMN

3100

053°

2.74° ≥
TCH 50

VGSI and descent angles
not coincident (VGSI
angle 3.00/TCH 51).

PRARY

2600

1.6 NM to
RW05L

RW05L

6 NM

3100

CLACK

ELEV 823

TDZE 803

</

RNAV (GPS) RWY 5L